

# Storm Water Resources Plan (SWRP)



Presented by the  
Tulare County Resource Management Agency  
September 14, 2017  
Ivanhoe Elementary School

# Meeting Agenda



1. Welcome and Introductions
2. Purpose and Objectives of the Meeting
3. Storm Water Resource Plan
4. Summary of Topics Discussed and Next Steps
5. Conclusion of Meeting

# Welcome and Introductions



## County of Tulare RMA

- Ross Miller – Chief Engineer
- Andres Perez – Engineer
- Rosa Sanchez – Outreach Coordinator

# SWRP – Purpose of Plan



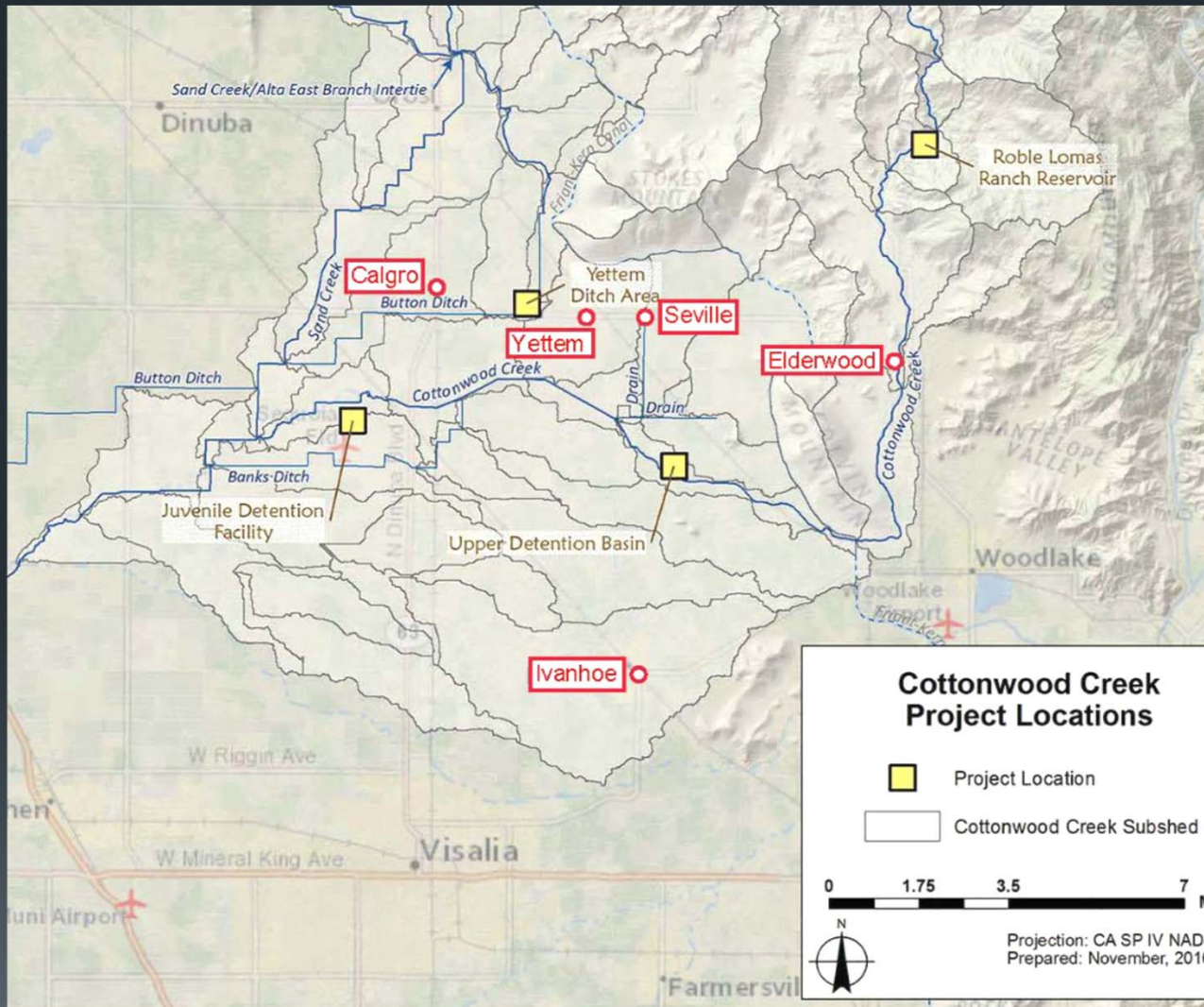
- View storm water as a beneficial resource, not a nuisance
- Improve water quality and supply using storm water
- Protect vulnerable people and communities from flooding
- Improve or restore the natural environment
- Improve communities

# SWRP – Process & Results



- Identify the priorities for the basin
- Receive community input on projects
- Prioritize projects with multiple benefits
- Create a plan to effectively use storm water as a resource for the basin
- Be more competitive for grant funding opportunities
- Help achieve regional planning goals

# SWRP – Basin Area



## Watershed Communities

- Yetttem
- Seville
- Calgro
- Ivanhoe
- Elderwood

# Purpose and Objectives of the Meeting



- Receive input from the community on their priorities
- Discuss previously identified projects and their benefits to the basin
- Identify additional/alternative projects with community input

# SWRP – How are Projects Identified, Scored and Prioritized?



Qualifying projects must have at least two (2) of the following five (5) benefits and must be quantifiable.

## 1. Water Quality

- Example: Increased filtration/treatment of runoff
- Quantification: Reduction of pollutant load

## 2. Water Supply

- Example: Runoff capture and use
- Quantification: Volume captured of runoff captured and used

## 3. Flood Management

- Example: Decreased flood risk
- Quantification: Volume of flood water captured



# SWRP – How are Projects Identified, Scored and Prioritized? (Cont.)



## 4. Environmental

- Example: Habitat improvement/restoration or increased urban greening
- Quantification: Acres of habitat improvement

## 5. Community

- Example: Enhanced and/or created recreational and public use areas
- Quantification: Acres of recreational and public use area

Projects are scored by benefit category on the amount of quantifiable benefit that it provides.

Projects are prioritized by the cumulative score in all benefit categories.

# SWRP – Previously Identified Projects

1. Juvenile Detention Facility (JDF) Detention / Retention Project
2. Upper Detention / Retention Project
3. Robles Lomas Ranch Detention Project
4. Yettem Detention Project

The first 3 projects were found to have at least 2 of the required benefits for funding

# SWRP – Projects



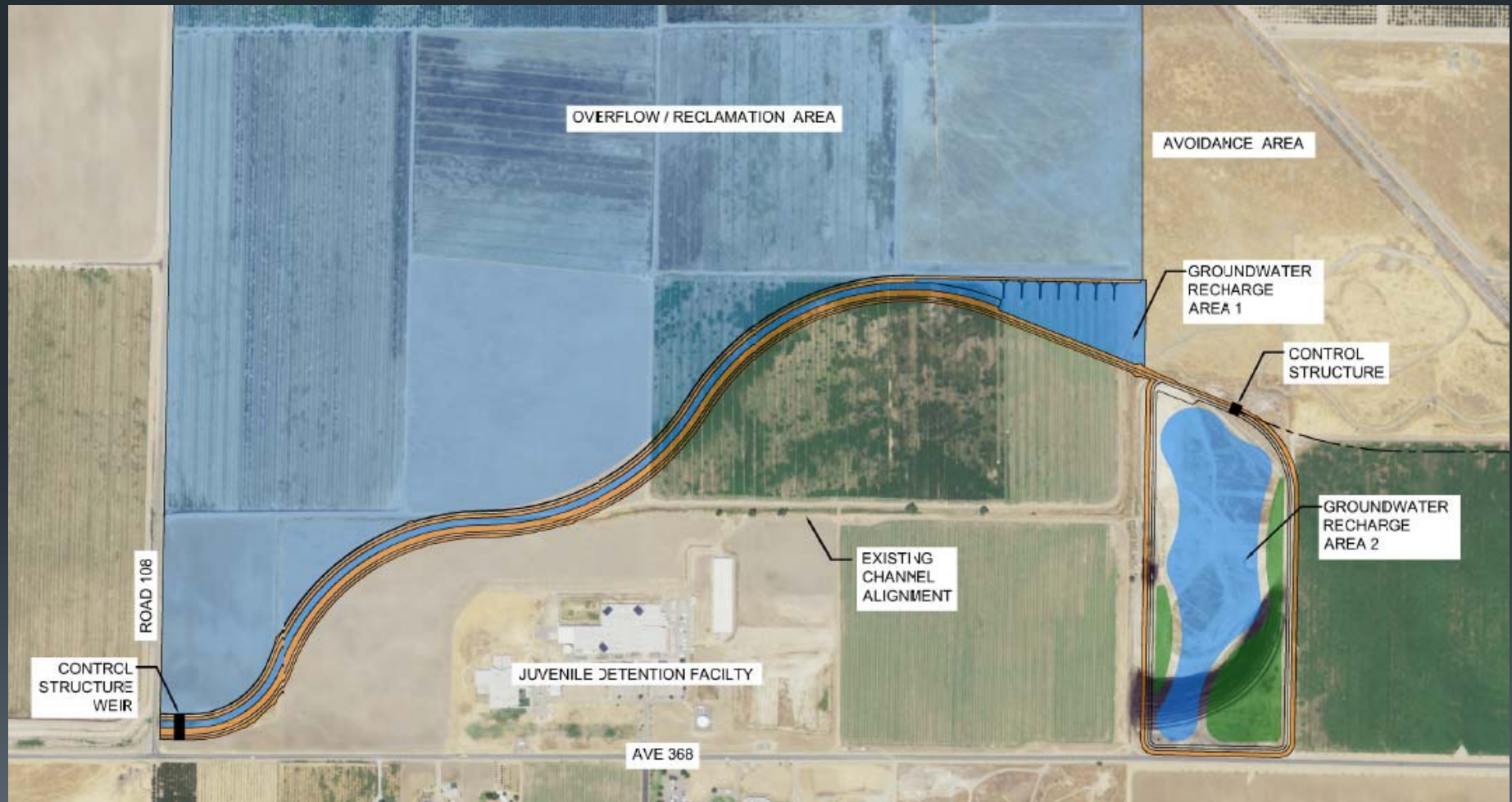
## Juvenile Detention Facility (JDF) Detention / Retention Project

Location: East of Road 108 & Avenue 368

- Multi-part project
- 2 retention basins
- Flood easement for detention/retention
- Berm on the south portion of creek for flood protection
- Realignment of approximately 8,500 feet of the creek bottom to restore natural meandering creek

# SWRP – Projects

## JDF Detention / Retention Project



# SWRP – Projects



## Upper Detention / Retention Project

Location: Downstream from the Friant-Kern Canal near intersection of Road 164 and Avenue 362

- Detention/retention basin will temporarily detain high flows in the Cottonwood Creek
- Decrease flows downstream
- Retain a portion of stream for infiltration
- Project location is located in very permeable soils to facilitate groundwater recharge

# SWRP – Projects



## **Robles Lomas Ranch Detention Project**

Location: Upstream of the community of Elderwood

- Single-purpose flood control project
- Approximately 60 feet tall detention dam
- Dam will store approximately 5,000 acre-feet
- Detention dam will limit the releases of runoff to less than 1,000 cubic feet per second (cfs)

# SWRP – Projects



## Yettem Detention Project

Location: Adjacent to the Button Ditch near intersection of Road 144 & Avenue 384

- Detention basin to temporarily detain high flows
- Decrease the severity of flooding in the community of Yettem
- Construction of a berm around 80 acres of agricultural land



# SWRP – Overall Project Prioritization Results

Project	Water Supply	Habitat Restoration	Flood Management	Water Quality	Project Ranking
JDF Project	High	High	High	High	1
Upper Project	Medium	Low	Medium	Medium	2
Robles Lomas Ranch Project	Low	Low	High	Low	3
Yettem Project	Low	Low	Low	Low	4



# Storm Water Resources Plan (SWRP)



Questions / Comments?  
Additional/Alternative Projects?