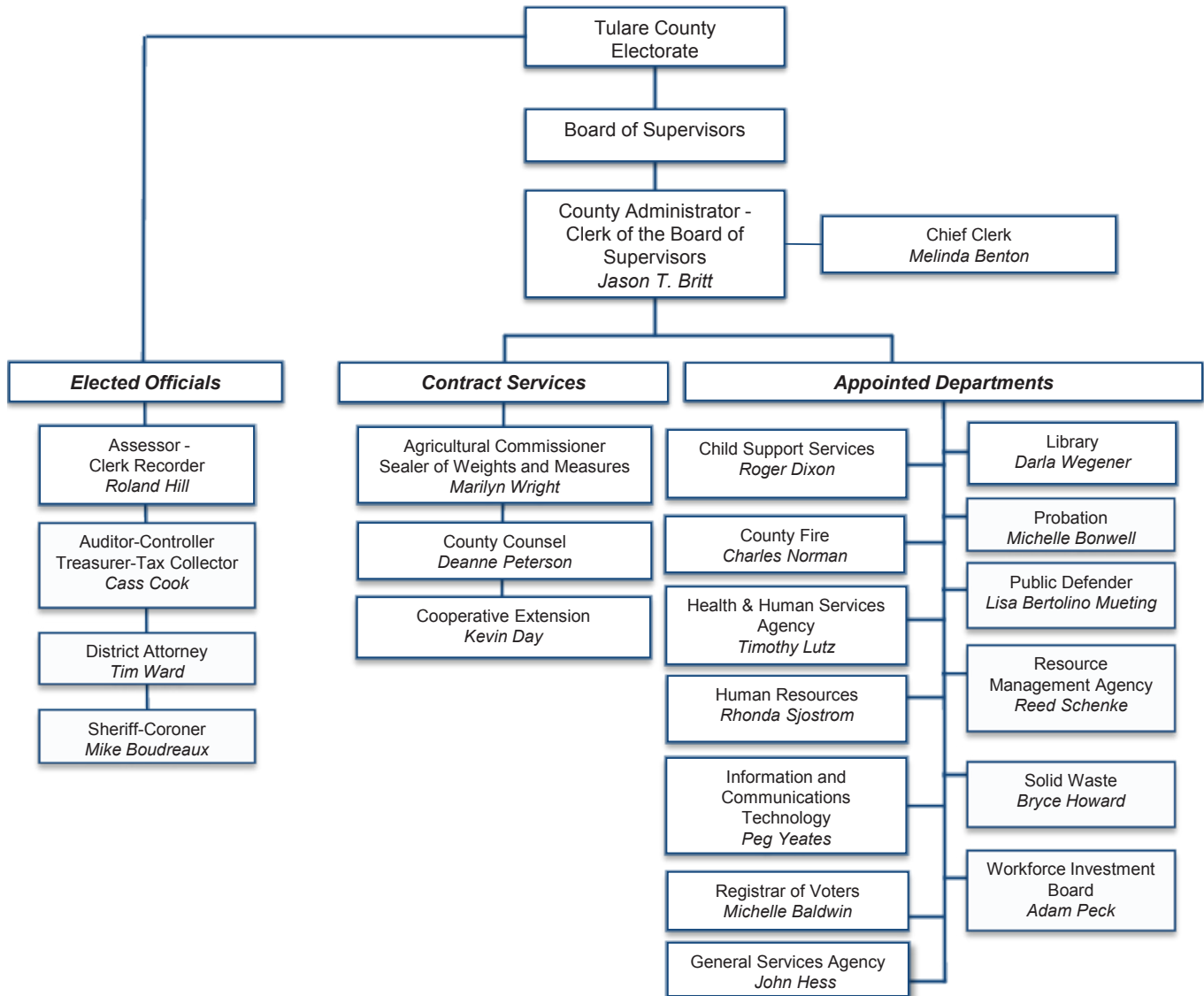




COUNTY OF TULARE

ORGANIZATIONAL CHART

FOR FISCAL YEAR ENDED JUNE 30, 2019



The organization chart is a visual depiction of the way work is distributed within the County of Tulare. It is also meant to be a tool to help our working relationship with the residents of Tulare County to create channels of communication in order to better accomplish our goals and objectives.