

BOS-004A Second Modified Kindschuh Map 11/09/21  
**FINAL**

Urban Development Boundaries

Cities

Layer

District

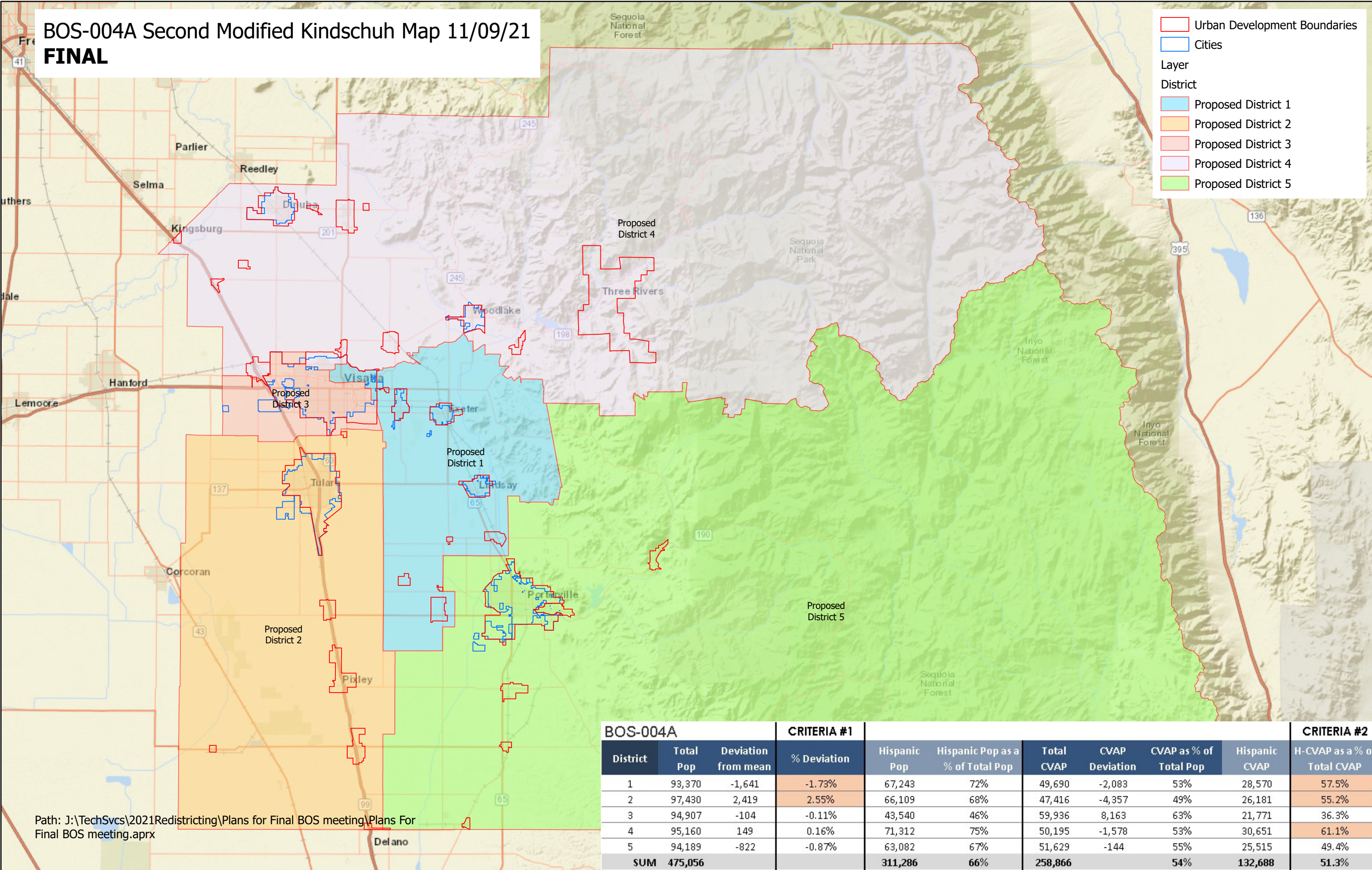
Proposed District 1

Proposed District 2

Proposed District 3

Proposed District 4

Proposed District 5



Path: J:\TechSvcs\2021Redistricting\Plans for Final BOS meeting\Plans For  
Final BOS meeting.aprx

| BOS-004A |           |                     | CRITERIA #1 |              |                                  |            |                |                        |               | CRITERIA #2                 |  |
|----------|-----------|---------------------|-------------|--------------|----------------------------------|------------|----------------|------------------------|---------------|-----------------------------|--|
| District | Total Pop | Deviation from mean | % Deviation | Hispanic Pop | Hispanic Pop as a % of Total Pop | Total CVAP | CVAP Deviation | CVAP as % of Total Pop | Hispanic CVAP | H-CVAP as a % of Total CVAP |  |
| 1        | 93,370    | -1,641              | -1.73%      | 67,243       | 72%                              | 49,690     | -2,083         | 53%                    | 28,570        | 57.5%                       |  |
| 2        | 97,430    | 2,419               | 2.55%       | 66,109       | 68%                              | 47,416     | -4,357         | 49%                    | 26,181        | 55.2%                       |  |
| 3        | 94,907    | -104                | -0.11%      | 43,540       | 46%                              | 59,936     | 8,163          | 63%                    | 21,771        | 36.3%                       |  |
| 4        | 95,160    | 149                 | 0.16%       | 71,312       | 75%                              | 50,195     | -1,578         | 53%                    | 30,651        | 61.1%                       |  |
| 5        | 94,189    | -822                | -0.87%      | 63,082       | 67%                              | 51,629     | -144           | 55%                    | 25,515        | 49.4%                       |  |
| SUM      | 475,056   |                     |             | 311,286      | 66%                              | 258,866    |                | 54%                    | 132,688       | 51.3%                       |  |
| MEAN     | 95,011    |                     | 4.27%       | 62,257       | 66%                              | 51,773     |                | 54%                    | 26,538        | 51.3%                       |  |