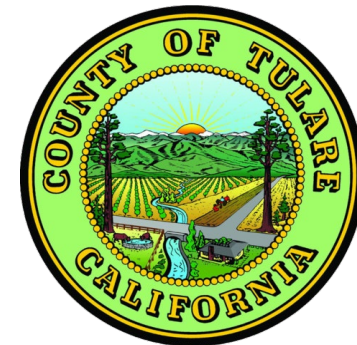


Springville Community Plan Update

Community Meeting 8

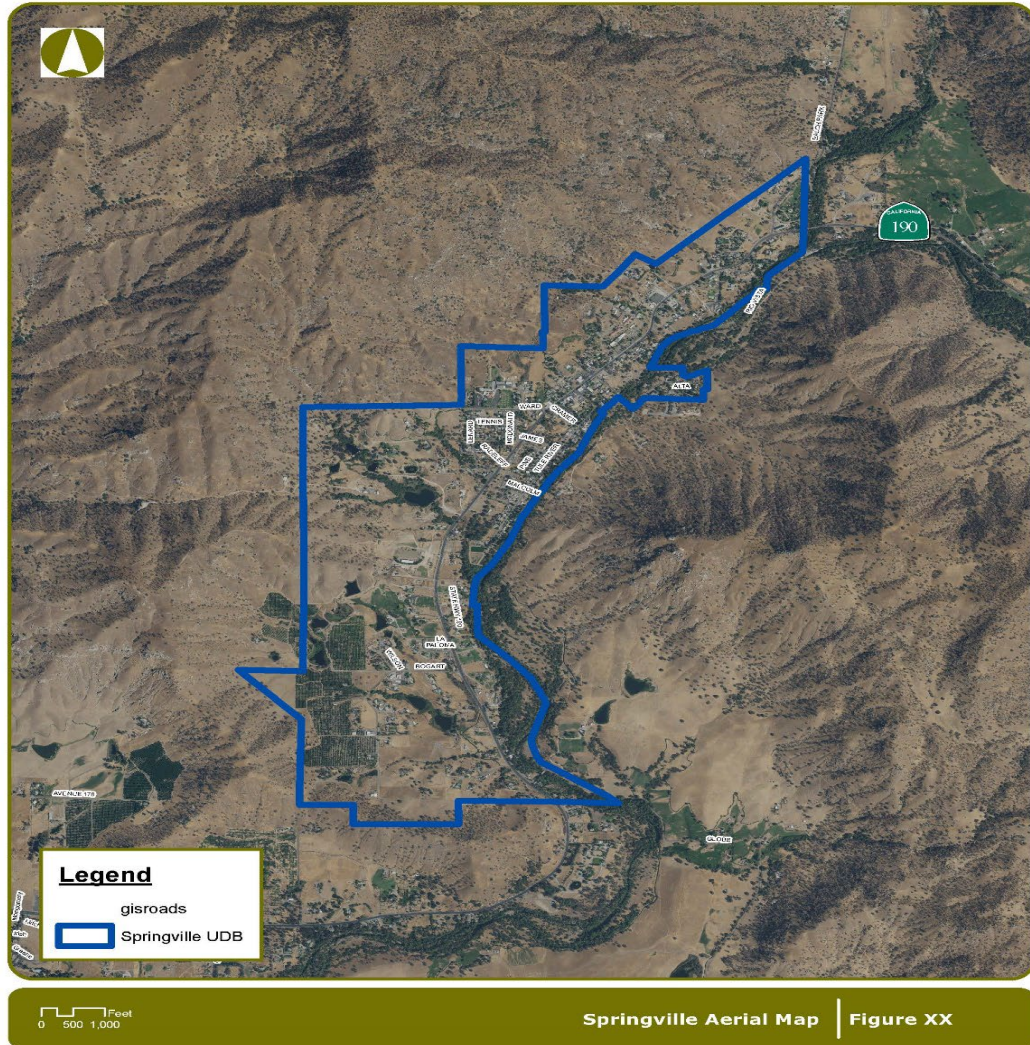
August 25, 2022



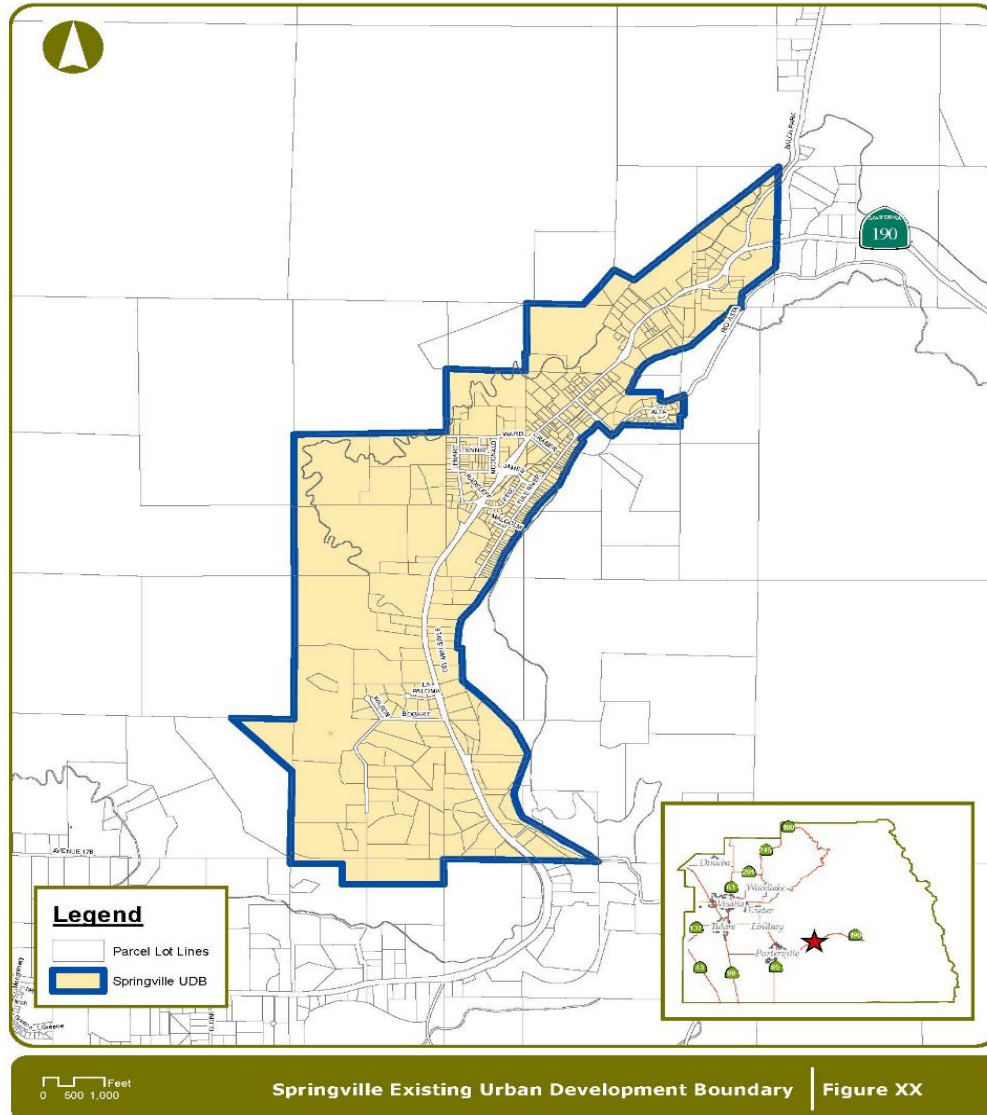
Agenda

1. Introduction
2. Current Springville Urban Development Boundary
3. Current Land Use (Mixed Use)
4. Current Zoning Districts
5. Policies (see separate PDF)
7. Questions & Comments
8. Concluding Remarks

Springville Community

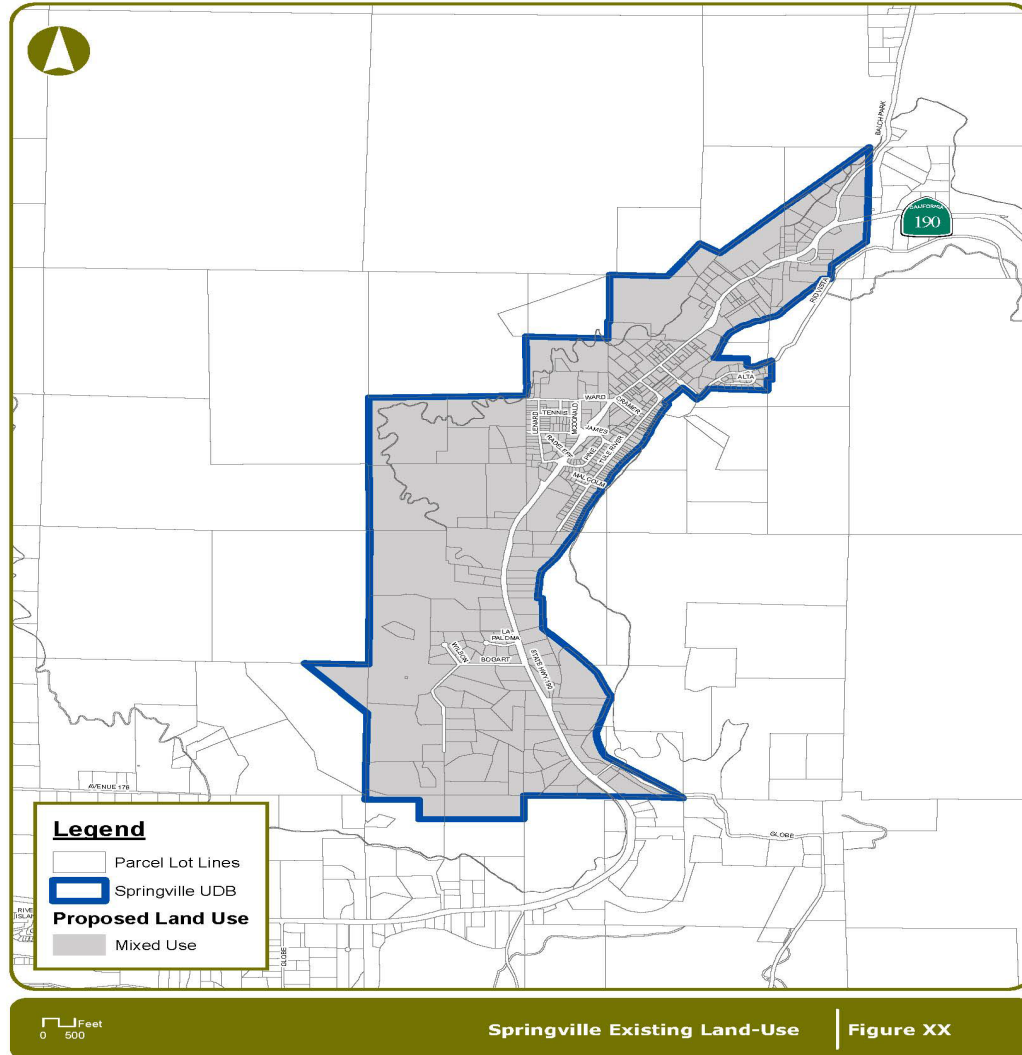


Existing / Proposed Springville Urban Development Boundary



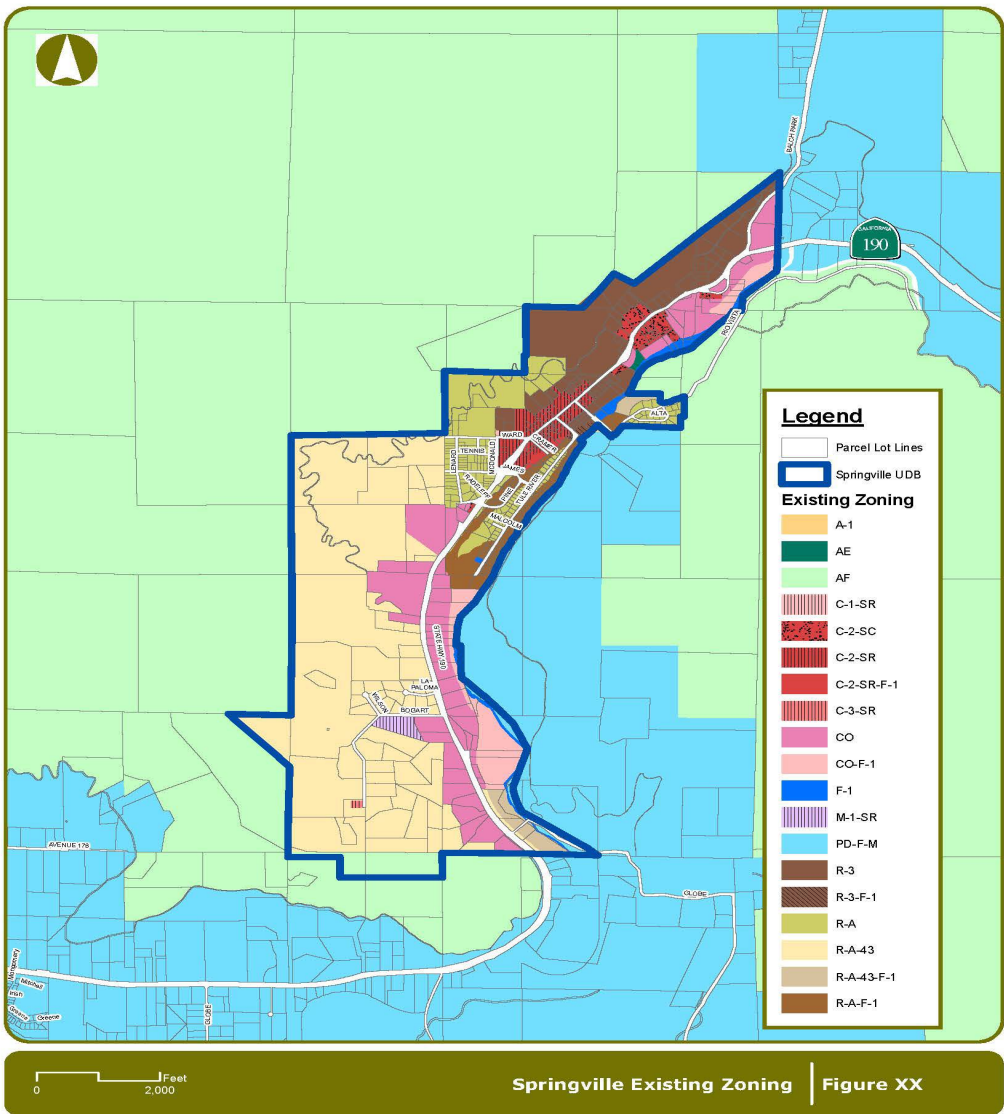
Existing UDB area = 953.6 acres
No Change

Adopted / Proposed Springville Land Use Map



Adopted Land Use Map = 953.6 acres
No Change

Existing Springville Zoning Districts Map



Tulare County General Plan Update Guiding Policies



2. Planning Framework

PF-1

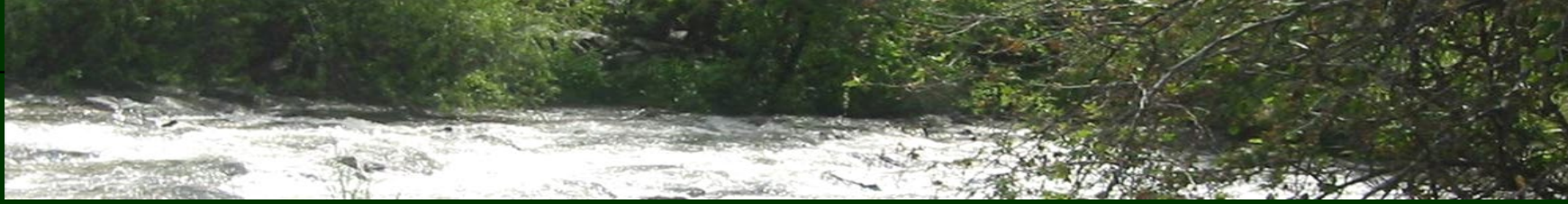
To provide a planning framework that promotes the viability of communities, hamlets, and cities while protecting the agricultural, open space, scenic, cultural, historic, and natural resource heritage of the County *[New Goal]*.

PF-2

To provide a realistic planning area around each unincorporated community that clearly delineates the boundaries of each community and provides a framework for economic development, the provision of public services, and an outstanding quality of life *[Urban Boundaries Element; Goal 3, Goal 1UB.C][Urban Boundaries Element Amendment (88-01); 1988, Modified]*.

PF-2.4 *Community Plans* The County shall ensure that community plans are prepared, updated, and maintained for each of the communities.

PF-2.7 *Improvement Standards in Communities* The County shall require development within the designated UDBs to meet an urban standards for curbs, gutters, sidewalks, and community sewer and water systems.



10. Health and Safety

HS-1

To protect County residents and visitors from injury and damage resulting from natural catastrophes, man-made events, and hazardous conditions *[New Goal based on Five County Seismic Safety Element (1974); Goals 1, 2, 3, 6, 9, 12 & 13. Pg. 11]*.

Health and Safety for all Neighborhoods

HS-9

To support healthy lifestyles among residents of Tulare County through the built environment and land use decisions that play an important role in shaping the pattern of community development, in either promoting or discouraging good health for its citizens *[New Goal]*.



14. Public Facilities and Services

PFS-1

To establish and maintain acceptable levels of service, minimize costs, and provide criteria for determining the location, capacity, and timing of existing and future public facilities and services *[New Goal]*.

Adequate Quantity and Quality of Public Services

Policies

See Policy Attachment

Thank You for Attending



Aaron R Bock, MCRP, JD, LEED AP
Assistant RMA Director
Economic Development & Planning
5961 South Mooney Blvd.
Visalia, CA 93277
(559) 624-7050

Susan Simon
Tulare County RMA, Planner IV
5961 South Mooney Blvd.
Visalia, CA 93277
(559) 624-7126