

NFIP

NATIONAL FLOOD INSURANCE PROGRAM

PANEL 1368E

FIRM
FLOOD INSURANCE RATE MAP
TULARE COUNTY,
CALIFORNIA
AND INCORPORATED AREAS

PANEL 1368 OF 2550
(SEE MAP INDEX FOR FIRM PANEL LAYOUT)

CONTAINS:

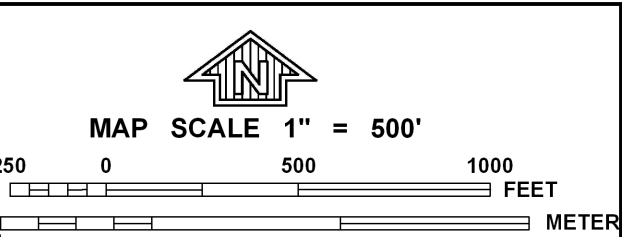
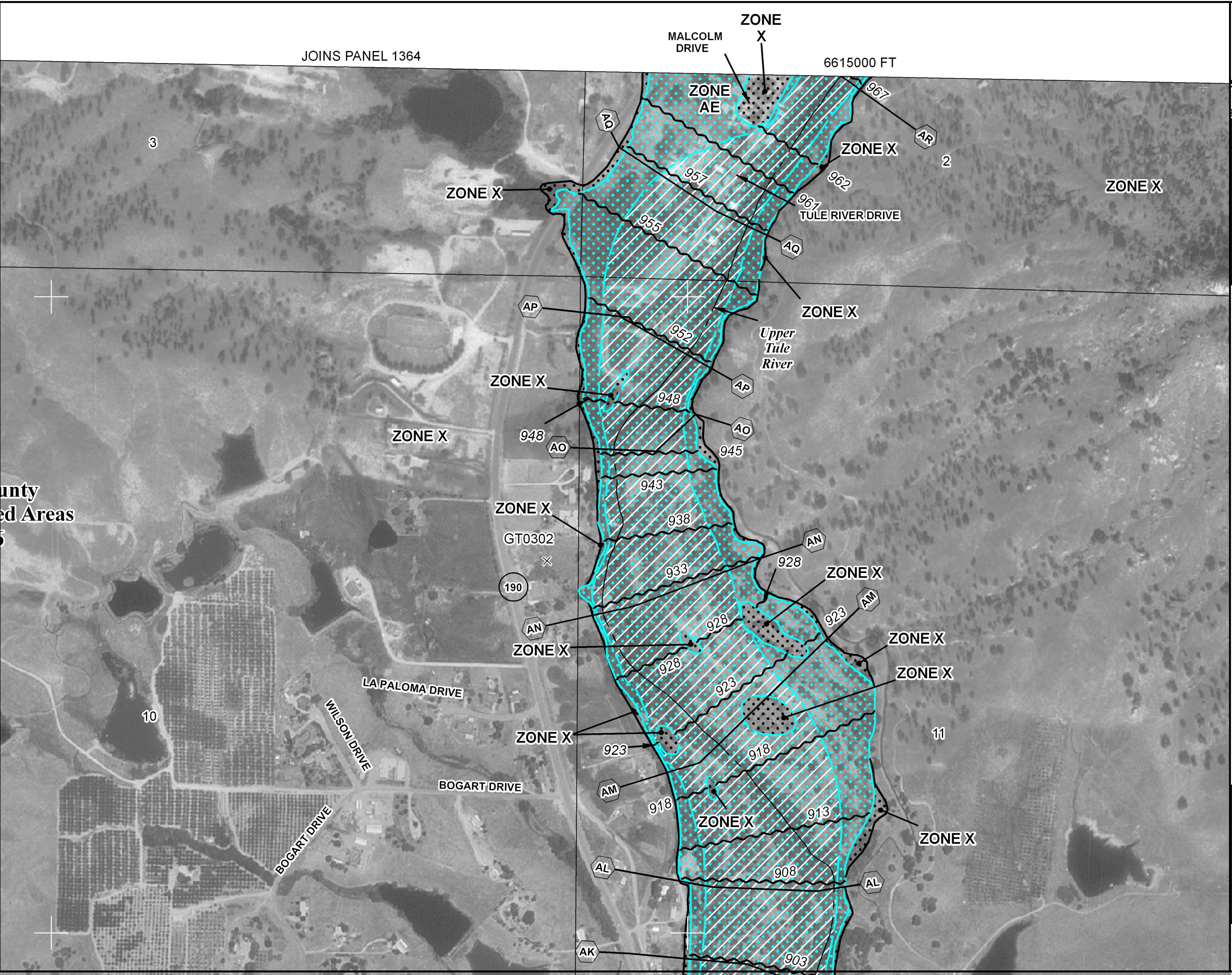
COMMUNITY	NUMBER	PANEL	SUFFIX
TULARE COUNTY	065066	1368	E

MAP NUMBER
06107C1368E

EFFECTIVE DATE
JUNE 16, 2009

Federal Emergency Management Agency

This is an official copy of a portion of the above referenced flood map. It was extracted using F-MIT On-Line. This map does not reflect changes or amendments which may have been made subsequent to the date on the title block. For the latest product information about National Flood Insurance Program flood maps check the FEMA Flood Map Store at www.msc.fema.gov



NFIP
NATIONAL FLOOD INSURANCE PROGRAM

PANEL 1677E

FIRM
FLOOD INSURANCE RATE MAP


**TULARE COUNTY,
CALIFORNIA
AND INCORPORATED AREAS**

PANEL 1677 OF 2550
(SEE MAP INDEX FOR FIRM PANEL LAYOUT)

CONTAINS:

COMMUNITY	NUMBER	PANEL	SUFFIX
TULARE COUNTY	065066	1677	E

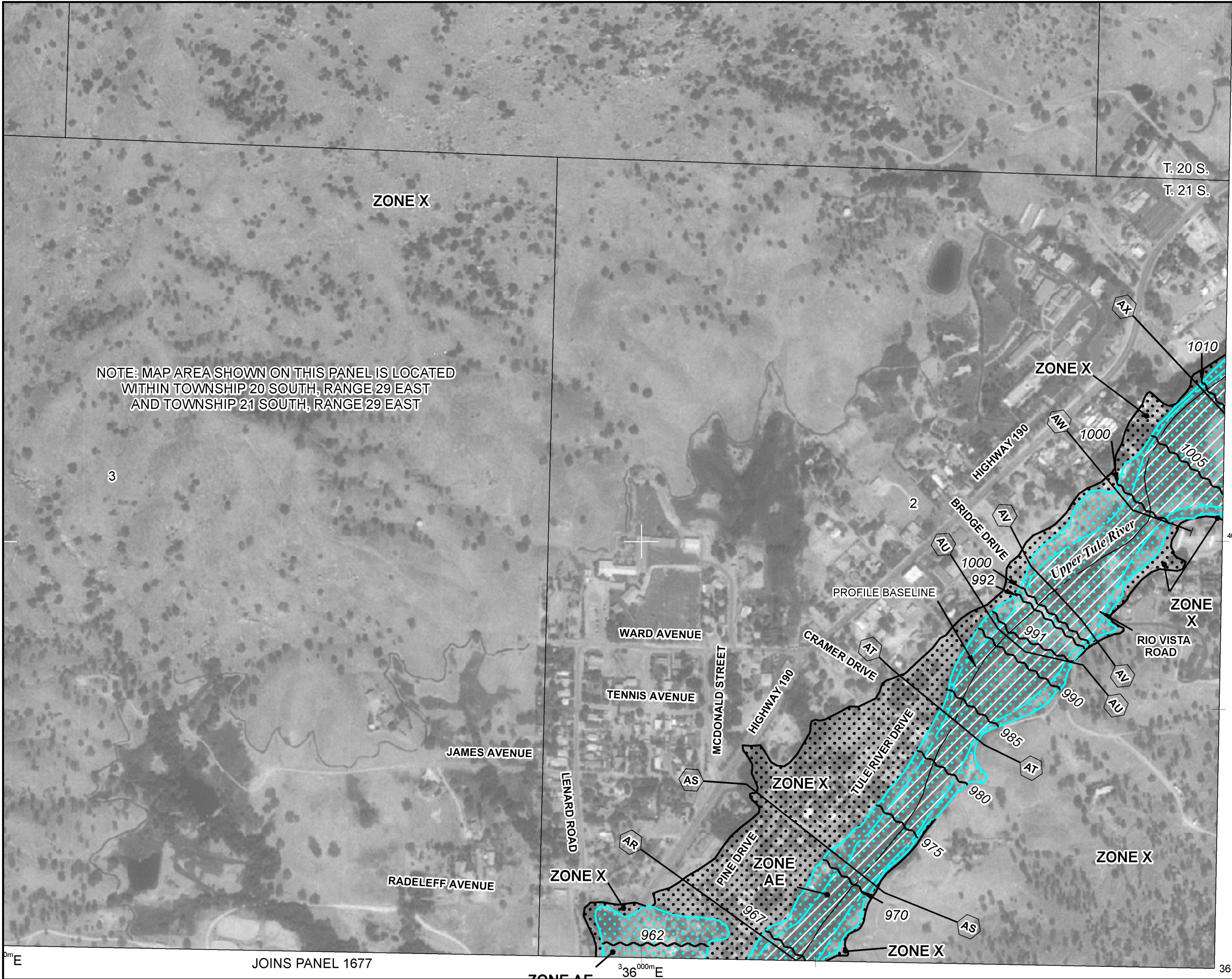
Notice to User: The Map Number shown below should be used when placing map orders; the Community Number shown above should be used on insurance applications for the subject community.

 **MAP NUMBER**
06107C1677E

EFFECTIVE DATE
JUNE 16, 2009

Federal Emergency Management Agency

This is an official copy of a portion of the above referenced flood map. It was extracted using F-MIT On-Line. This map does not reflect changes or amendments which may have been made subsequent to the date on the title block. For the latest product information about National Flood Insurance Program flood maps check the FEMA Flood Map Store at www.msc.fema.gov



MAP SCALE 1" = 500'

250 0 500 1000 FEET

METER

NFIP

PANEL 1364E

FIRM

FLOOD INSURANCE RATE MAP

TULARE COUNTY,
CALIFORNIA
AND INCORPORATED AREAS

PANEL 1364 OF 2550
(SEE MAP INDEX FOR FIRM PANEL LAYOUT)

CONTAINS:

COMMUNITY	NUMBER	PANEL	SUFFIX
TULARE COUNTY	065066	1364	E

Notice to User: The Map Number shown below should be used when placing map orders; the Community Number shown above should be used on insurance applications for the subject community.

MAP NUMBER
06107C1364E

EFFECTIVE DATE
JUNE 16, 2009

Federal Emergency Management Agency

This is an official copy of a portion of the above referenced flood map. It was extracted using F-MIT On-Line. This map does not reflect changes or amendments which may have been made subsequent to the date on the title block. For the latest product information about National Flood Insurance Program flood maps check the FEMA Flood Map Store at www.msc.fema.gov