



RESOURCE MANAGEMENT AGENCY

5961 SOUTH MOONEY BLVD
VISALIA, CA 93277
PHONE (559) 624-7000
FAX (559) 730-2653

Michael Washam Economic Development and Planning
Reed Schenke Public Works
Sherman Dix Fiscal Services

REED SCHENKE, DIRECTOR

MICHAEL WASHAM, ASSOCIATE DIRECTOR

February 5, 2019

Supervisor Kuyler Crocker (Chairman) (District One)
Supervisor Pete Vander Poel (District Two)
Supervisor Amy Shuklian (District Three)
Supervisor Eddie Valero (District Four)
Supervisor Dennis Townsend (District Five)
Jason Britt, CAO
2800 West Burrel Avenue
Visalia, CA 93291

Dear Supervisors and Mr. Britt:

The Public Works Branch of the Resource Management Agency (RMA) respectfully submits the following report to you to document the progress in the branch for the month of January 2019.

PUBLIC WORKS RECOGNIZED AT 2018 TCAG LOCAL MOTION AWARDS

On January 24th the Public Works division of the Resource Management Agency received recognition from the Tulare County Area of Governments (TCAG) for three of its public works projects. The County's Avenue 280



Widening Project turned an approximately 2 mile long stretch of existing two lane roadway into a four lane divided roadway from State Route 99 to Road 100 (Akers) near the westerly limits of the City of Visalia, and was recognized by TCAG as an Outstanding Road Project. This project included multi-jurisdictional cooperation between the City of Visalia, Tulare County, Caltrans, and utility owners. The project involved reconstruction of a two cell box culvert at the Evans Ditch crossing of Shirk Road (completed in coordination with Tulare Irrigation District) and relocation of over 1-mile of overhead transmission and distribution electrical lines (completed in coordination with Southern California Edison Company). Another major component of this project was the installation of over 12,000 feet of storm drainage pipe ranging in size from 12" to 30," as well as the construction of off-site retention basin to serve as both water storage and recharge. Installation of a traffic signal at the Avenue 280/Shirk Road intersection which accommodates the ultimate planned intersection geometry as established by the City of Visalia is also part of the project. Over 60 street lights were installed throughout the corridor to improve visibility and safety to all modes of transportation.

TCAG also recognized the D-39 Bridge project located at the Old State Highway 99 approximately 0.1 mile south of Avenue 368 and ½ mile northwest of the town of Traver as an Innovative Sustainable Transportation Project. This project replaced the existing functionally obsolete two-lane bridge over Traver Canal that was originally constructed in 1918. The existing structure was replaced for several reasons including: (1) the structure was very narrow, resulting in multiple vehicle impacts to the approach end guard-railing and limited use for local agricultural needs; (2) the bridge as originally designed did not meet current engineering standards for vehicle load capacity; and (3) the 100 year old bridge was experiencing advanced concrete degradation, spalling and reinforcement exposure. The new bridge provides unobstructed access to surrounding residents, farming operations, and businesses in the area. The previous structure was not designed to permit large vehicles and agricultural equipment to safely cross Traver Canal. All detours to accommodate the larger equipment resulted in increased traffic on local residential roads in the town of Traver. The County also worked closely with Alta Irrigation District to ensure that bridge construction occurred outside of the typical irrigation supply window as local businesses depend on local water deliveries.



TCAG also recognized Tulare County Area Transit (TCaT) as its Social Services Transportation Provider. TCaT is a rural transit system providing fixed-route service on four intercity routes and five local circulator routes, as well as Dial-A-Ride demand-response bus services with four distinct service areas serving eighteen unincorporated communities, as well as the City of Lindsay and certain areas and neighborhoods outlying other cities. These services connect rural communities to urbanized areas-the cities of Visalia, Porterville, Tulare, and five smaller cities. Bus transportation is a key method of transportation for transit dependent, low-income families and senior citizens. Transportation to medical facilities, social service agencies, employment, and institutions of higher learning are typically only found in Porterville, Tulare and Visalia. TCaT is the primary linkage between the transit dependent rural resident and these services as well as a connection to Delano and Kern County. The County has offered services since 1981. TCaT logged 1,010,179 miles for the fiscal year 2017/18; of those million miles, 70,199 have been in the Dial-A-Ride service in the rural areas of Tulare County. TCaT has provided services to 7,669 passengers. TCaT prides itself on quality customer service.

BALCH PARK (BEAR CREEK) ROAD BRIDGE

During the month of January, construction continued on this project. Contractor Agee Construction cut abutment benches, mobilized pile drilling equipment up to the site, and assembled abutment forms and panels. Near the end of the month, Agee finished installing all cast-in-drilled-hole concrete piles supporting the abutments as part of the first stage of bridge construction. During the month of February, Agee will pour stage 1 abutments and wingwalls and begin erecting falsework and deck panels. Bridge construction is anticipated to take approximately 9 months and will be completed in stages to keep Bear Creek Road open in the absence of a viable detour.



MANAGEMENT GROUP 1:

During January the Road's Maintenance crew performed the following work:

ROAD MAINTENANCE

Work Performed	Total	Percent Increase/Decrease(-) from Prior Month
Potholes Patched	34,371	-38%
Shoulder work (Lane miles)	37	40%
Blade Patches (Miles)	3	-86%
Bridges maintained	11	-35%
Constituent requests	74	48%
After hour call-outs	16	78%

A graph showing a comparison of the work performed in 2018 and 2019 by the Roads Department is attached to the end of this report.

Road crews continue to plow light snow on M107 (Western Divide) and M50 due to the potential of a mudslide on State Route 190 caused by the Pier Fire. Road closure may occur if snowfall is heavy and continuous.

ROAD DISTRICT 1:

Activities in January include:

- Plowed snow a total of 22 days. Of the total, 7 days were dedicated to snow removal on the M107 (Divide) and M50.
- Supervised the Mountain Home/CalFIRE inmate crew a total of 13 days for roadside brushing.
- Continued mowing of shoulders at 2 locations for approximately 4 lane miles;
- Cleared 3 locations for rock and mudslides.





Crews also removed a total of 75 downed trees at 6 locations.

DISTRICT 2:

Activities in January include:

- Blade patched approximately 3 miles of roads with grinding;
- Performed shoulder maintenance for approximately 14 lane miles;
- Newly formed concrete crew working on bridge headwalls, wingwalls and their first curb return:



- Performed dead cow removal for Code Compliance:



DISTRICT 4:

Activities in January include:



Continued checking culvert and drain inlets including pumps district wide during heavy rainfall and clearing rock/mudslides

- Performed shouder work maintenanc at 6 locations;
- Performed bridge maintenance at 2 locations



Performed trimming, mowing and weed abatement at 39 locations



Assisted Code Compliance in the homeless eradication in Cutler/Orosi

DISTRICT 5:

Activities in January include:

- Performed a total of 20 days of snow removal. Of the total, 10 days were dedicated to M107 (Divide) and M50;
- Performed 6 days of pothole patching for a total of 29 miles and 5,200 potholes filled;
- Performed bridge maintenance work by sweeping the deck.



Continued culvert pipe and drain inlet maintenance



Continued to remove rockslides and downed trees including the M107 (Divide)



TRAFFIC CONTROL:

SIGN MAINTENANCE

Work Performed	Total	Percent Increase/Decrease(-) from Prior Month
New signs installed	26	-13%
Routine maintenance of signs	139	-32%
Vandalized signs repaired/replaced	138	-4%
Worn traffic signs repaired/replaced	142	184%
Miles of Road striped	0	0%
Stencils installed (Sq ft)	50	5000%
Traffic signal repair	2	100%
Illegal signs removed from R/w	21	40%

Activities in January include:

- Per constituent request, install Double Flashing Beacon for westbound traffic at Strathmore High School;
- Crews responded to 10 call-outs for downed stop signs or signal malfunctions;
- Night inspection of signs ongoing;
- Installed Board approved Stop sign installations at 2 locations in Strathmore (on Lawson at Guthrie and at Balfour) and in Ivanhoe at Waverly and Walter:



Goshen frontage road/business signs installed at constituent requests:



Installed flashing beacons in Earlimart at Alila Elementary School as part of the Measure R community improvement project.

Measure R Tooleville Rapid Flashing Beacon speed feedback sign installed.



TRAFFIC DIVISION:

- Staff reviewed constituent requests for Stop signs, speed advisories, etc. as they were received;
- Filed investigation report in Earlimart regarding the posting of 35 mph signs on State Street. Additional signs installed to enforce speed limit;
- Accident investigation at the intersection of Road 156 at Avenue 288 and at Road 140 at Avenue 248;
- Completed an All-Way Stop Analysis at Avenue 328 at Road 156 in Ivanhoe;
- Agenda item submitted and Board approved installation of Stop signs in Strathmore at Balfour, Lawson and Guthrie;
- Agenda item submitted and Board approved a Stop sign installation on Waverly Court at Walter Avenue in Ivanhoe.

SAFETY:

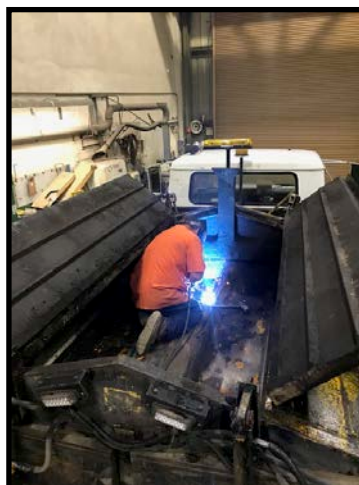
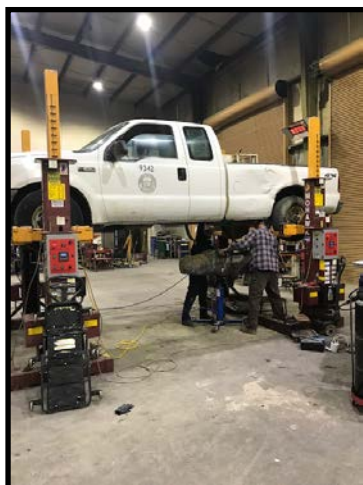
- There were **NO CLAIMS** through Risk Management during this reporting period;
- Field observation of road crew during snow removal operations in District 5;
- Inspected jobsite locations to observe safety practices and procedures of the road crew;



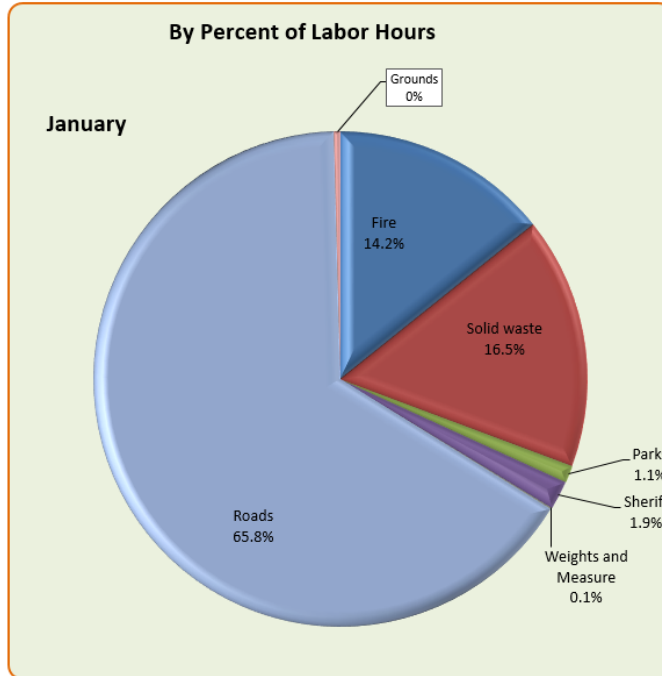
- The litigation case for *Ross vs. Whiting* was dismissed.

HEAVY EQUIPMENT MAINTENANCE DIVISION:

For the month of January, the Heavy Equipment Shop maintained various pieces of equipment for 7 agencies completing 413 work orders for a total of 2,157 hours as shown in the chart below:



Agency	Work Orders	Labor Hours
Fire	46	307
Solid waste	57	355
Parks	10	24
Sheriff	10	40
Weights and Measure	2	3
HHS	0	0
Roads	285	1419
Grounds	3	9
Agriculture	0	0
Total	413	2157



ENCROACHMENTS:

The following encroachments within the Right-of-Way were addressed as follows:

- Received 21 calls for right way issues and complaints;
- 3 new encroachment cases opened;
- 5 encroachment cases closed due to compliance such as for abandoned vehicles within the right of way;



Before



After

- Patrolled 2,140 miles of roadway.

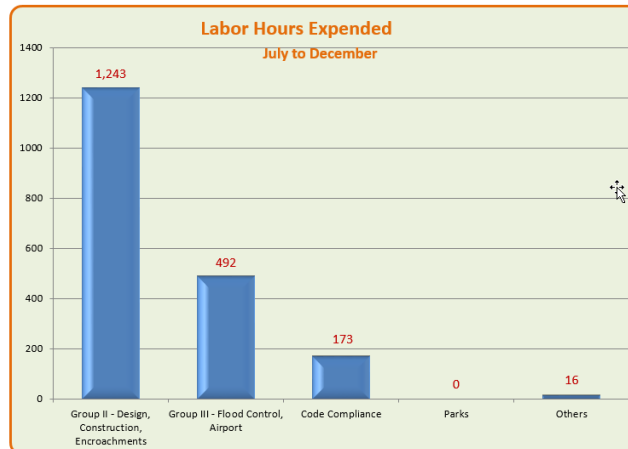
WORKED PERFORMED BY GROUP 1 FOR OTHERS:

For the time period from July to December, 2018, Group 1 performed approximately 61 days of work totaling 1,924 labor hours for 5 entities.

Total work performed for others from January to December, 2018 was 98 days for 2,986 labor hours.

July to December 2018

Entity	Project	Days	Labor Hours
Group II - Design, Construction, Encroachments	Earlmar Park	30	1243
Group III - Flood Control, Airport	Transit Maintenance, Shelter installation	17	492
Code Compliance	Homeless eviction (1), MJ erad. (7 loc)	13	173
Parks		0	0
Others	BOS Parking Lot	1	16
		Total	61 1924



MANAGEMENT GROUP 2:

BRIDGE PROJECTS

During the month of January staff held kick-off meetings and field reviews with Caltrans to initiate the environmental process on all three projects. In February consultants will begin performing environmental site surveys and drilling exploratory borings to help determine the appropriate foundation type for each site. This effort included projects:

- Avenue 108 Lakeland Canal Bridge
- Avenue 376 Traver Canal Bridge
- Avenue 428 Sand Creek Bridge

Design consultants continue to work on the following projects:

- Avenue 424 Traver Canal Bridge**
- Road 204 Wutchumna Ditch Bridge
- M348 South Fork Kaweah River Bridge**
- Avenue 364 Cottonwood Creek Bridge*
- Avenue 392 Sand Creek Bridge*
- Avenue 174 Friant-Kern Canal Bridge
- D112 Bates Slough Bridge
- D112 North Branch Tule River Bridge

During the month of January, consultants continued moving forward with the environmental and preliminary engineering phases of the eight projects listed above. Projects with an asterisk (*) indicate that 35% (environmental) design is complete and the project has Right-of-Way authorization to start negotiations for potential ROW and temporary construction easement (TCE) needs. Projects with a double asterisk (**) indicate 65% engineering design is complete and final design has started.

In January staff received Right-of-Way funding for the **Mineral King (Oak Grove) Historic Bridge**. Planning staff finalized the project MND and circulated the document for public review. CEQA is expected to be approved by the BOS in March. Structural engineering consultant, Cornerstone Structural Engineering Group, continued work on the final design of the bridge rehabilitation. Construction is anticipated to start in the fall of 2021.

Over the last few months staff has worked with Friant Water Authority (FWA) to address both short and long-term impacts to five bridges affected by subsidence along the Friant-Kern Canal. During the month of January the BOS approved a Memorandum of Understanding (MOU) with FWA to establish roles/responsibilities to ensure these bridges remain in sound working condition due to induced pressure flows (water flowing up against the superstructure/girders). Following MOU approval, FWA started and nearly completed all required preventive maintenance on the five bridges. Staff will follow-up with FWA to ensure all work has been performed in accordance with project plans and specifications during the month of February.



Although construction for the **D39 Traver Canal Bridge** was completed in early 2018, the CDFW Streambed Alteration Agreement provisions required off-site planting (mitigation) to be performed as a result of project tree removal. In January, staff coordinated all tree planting at the Kings River Park with Parks & Recreation Division Manager Neil Pilegard. Neil and his staff cleared the planting area of debris and growth, installed perimeter fencing and planted all trees in accordance with permit requirements. January kicks off the annual monitoring and maintenance program to achieve a tree survival goal of 75% after five years.

ROAD CONSTRUCTION PROJECTS

SPACER DRIVE SAFETY IMPROVEMENT (HSIP CYCLE 8): This project currently remains on temporary suspension while materials are on back order. The contractor has remained in contact with County staff and expects to have materials on site by the beginning of next week. County staff met with the subcontractor performing the sign installation work on January 30th and verified all sign placement locations, which the subcontractor marked out and called for USA utility location. This contractor is expected to return to the site early next week. All work is scheduled to be completed no later than February 8th.

AVENUE 280 WIDENING: The contractor returned to the project to continue with paving operations in January. A significant amount of the remaining paving work including replacing the material leading up to the SR 99 over-crossing on the west end of the project was completed by the end of January. Following paving operations, crews began to adjust the storm drain manholes to grade and installed the guardrail on the north end of Shirk Road. The contractor is currently scheduled to complete the remaining paving work on February 12th, while continuing to complete other items of work in the interim. Based on recent communications with the contractor, work is scheduled to be completed in early March.

SAFETY AND COMMUNITY IMPROVEMENT PROJECTS:

Earlimart ATP Sidewalk Improvements (ATP Augmentation): Funds for the Plans, Specifications and Estimates, were allocated and the Program Supplement was approved by the Board of Supervisors on March 6, 2018. RMA staff provided a brief presentation to Earlimart community members on December 12, 2018 at

the Earlimart Town Council meeting. The RMA staff is going to proceed with the design phase of the project and incorporate the suggestions provided by the community.

Allensworth Elementary Sidewalk Project (ATP Augmentation): In the month of January the contractor, DOD Construction, completed the relocation of the fire hydrant near the intersection of Young Road and Avenue 36. With all of the curb & gutter work previously completed, the contractor moved their attention to preparing the site for Community Service Employment Training Inc. (CSET) to place the remaining sidewalk along the east side of Young Ave. CSET is scheduled to be on site during the first week of February and estimate it will take 2 weeks to complete their portion of the work. DOD Construction has expressed concerns about beginning paving activities in the area during the winter months and has requested temporary suspension of the project. County staff has discussed the requested temporary suspension with the contractor and is in agreement that the suspension would benefit the quality of the paving work. County staff informed the contractor that all fencing work in front of Allensworth Elementary School must be completed prior to granting suspension.

Avenue 152 Safety Improvement Project: In the month of January the project remained in temporary winter suspension and no work was performed on the project. Due to ongoing winter weather, both the contractor and County staff are in agreement that project will remain in temporary suspension until conditions improve (likely in early March). County staff has continued to stay in communication with the contractor and has been informed that all materials for the proposed traffic signal at Road 208 have been ordered and are scheduled to be on hand and ready for installation in the next 2-3 months. In the past month Caltrans completed all work associated with Phase 1 of the State Route 190 project and has begun working on the next phase of the project between Road 120 and Road 152. No further interference should take place between the two projects.

2017 Community Improvement Project - Phase 3: This project remains under temporary suspension as the final items of work, applying slurry seal, is weather dependent and cannot be completed until the spring. While waiting for weather conditions to improve, DOD Construction has occasionally been by the project locations to make sure minor items of work are completed to the satisfaction of the County. In the past month the contractor has adjusted road signs to correct previously defined clearance issues as well as reworking the asphalt pavement leading onto the curb ramps to ensure a smooth transition. Once weather conditions improve, likely in March or April, the project will be taken out of temporary suspension and the contractor will complete all remain items of work then any noted punch list items will be completed.

Traver Jacob Street Improvements (ATP Cycle 2): Staff is coordinating with the utility companies and finishing the design phase. Funding allocation request for the construction funds was submitted for the March 13th California Transportation Commission (CTC) meeting. The project is anticipated to go to construction in summer 2019.

Woodville Sidewalk Improvement (ATP Augmentation-MPO Component): Right-of-Way certification was obtained on October 1st for the project. Construction funds were allocated by the California Transportation Commission (CTC) at the December 5th meeting. Construction documents were submitted for DSA review on January 23rd. The project is anticipated to go to construction in early summer 2019.

Worth Drive (M146) Safety Improvement Project (HSIP Cycle 7): Request for Authorization (E-76) was approved by Caltrans on January 8, 2019. Staff is going to the Board on February 26, 2019 for Authorization to Bid. The project is anticipated to go to construction in spring 2019.

Earlimart Park Sidewalk Improvement Project (ATP Cycle 2): The ninety percent internal review for the plans, specifications, and estimate are complete. The final comments are being addressed. NEPA and CEQA are both complete. The Right-of-Way certification documents are being reviewed by the Right-of-Way team. The Right-of-Way and easement acquisition documents with the School District are completed. Request for Authorization for construction is due to Caltrans Local Assistance on April 29, 2019. Staff is on track to submit the RFA for construction prior to the deadline. Construction for this project is anticipated for fall 2019.

Pixley Main St. Sidewalk Improvement Project (ATP Cycle 2): Design is progressing to the 60% benchmark where plans, specs, and an estimate will be delivered. The tentative date for this review to initiate is Friday, February 8, 2019. Additional surveying has been completed. CEQA is complete. NEPA is not required due to this project using State funds only. Right-of-Way acquisition and utility coordination is underway (primarily with AT&T and Pixley PUD) and Right-of-Way meetings with owners are ongoing. When the project was presented at the October 22nd regular meeting of the Pixley Town Council, Council members and members from the public expressed concerns with flooding at specific locations along the corridor. Staff completed a site reconnaissance to assess existing flooding issues along the corridor during the recent rain events, and identified additional improvements to help mitigate flooding issues. Due to this site visit, staff was able to determine an appropriate location to collect the water originating from the flooding issues. The project is under a tight funding deadline; staff is currently considering requesting a time extension under the ATP to allow adequate time to acquire the Rights-of-Way, easements, and to complete the design. Almost half of the Right-of-Way acquisitions have occurred and the written agreements have been completed on a timely basis as well.

Community Improvements Phase 6: This project includes ADA and related improvements at the Road 192/Avenue 146 intersection in Poplar, the Road 228/Avenue 196 intersection in Strathmore, and at the Avenue 416 midblock crossing between Road 126 and Eddy Road to Golden Valley School. The project is near completion of 60% PS&E development phase and will be undergoing internal review. Staff is coordinating with the utility companies. The project includes the relocation of a utility pole at the southeast corner of Road 228/Avenue 196 in Strathmore and adjusting vaults to grade on both the southwest and southeast corners. The relocation plans for the SCE utility pole are being reviewed. The staking of the proposed curb ramp was requested to verify the proposed poles will have adequate clearance. The project is locally funded. Design and Right-of-Way are expected to be completed by June 2019.

ASSISTANCE TO ECONOMIC DEVELOPMENT/PLANNING PROJECTS

Public Works provided GIS Maps to other branches of the Resource Management Agency. In January 181 maps were provided to the Planners for 22 separate projects.

ENCROACHMENT PERMITS

In January staff processed a total of 64 new encroachment permit applications. This is one of the highest monthly totals of new applications experienced by our staff. The work load continues to remain at high demand levels. Our staff also provided oversight and daily inspections for 35-40 daily/recurring active projects, and 3 tract improvement projects.

In January staff also:

- Processed and issued a total of 71 transportation permits comprised of 26 rider permits, 12 single-trip permits (including over-sized or overweight loads); and 33 blanket/annual permits;
- Issued 39 sub-encroachment permits for inspections of jobsites under utility company annual/blanket maintenance permits, as well as reviewed sites, signing and safety for dozens of short-term repairs;
- Reviewed routing and issued permits for 1 house structure relocation;
- Processed documents, reviewed traffic control plans/routes, and issued 4 special event/parade permits.

- Reviewed plans for a major gas pipeline upgrade project, met with Gas Company representatives to review necessary methods and plan work timetables.
- Staff provided inspections and oversight for the following major projects while continuing to provide service to general permits including:



Modoc Ditch Company Crossing Replacement:

The ditch company is building a new water canal crossing on Road 100, (Akers). This is to replace an aging and undersized delivery crossing and provide new Right-of-Way width for the future development of Road 100. Currently, to the south of the crossing the new paving constructed by the school and city is four lanes capable. This new crossing is a cement box culvert that will allow that new road width to continue north when the time comes to develop



that road section. The crews have closed the road under county and city permits, and are on schedule to complete the culvert on time and reopen the road in early February.

Tract Map – 789 / Goshen Village Phase 1: Construction of the portion of the tract along Avenue 310 in Goshen has progressed; curb and gutter will be installed soon. This project will also include improvements to the entire area between Avenue 308 and Avenue 310, making available more than 70 single dwelling residential building lots. Work is now underway on the improvements to the internal portion of the tract, this should continue throughout the spring and summer. Our inspectors will be providing oversight for water, sewer and storm drain pipelines, utility trenching including electrical, gas, telecom and cable services. Also included in the inspection duties are the subgrade structures, testing and paving sections, curb and gutter, sidewalks and all ADA installations. Weather is expected to delay the project.

Cutler/Orosi PUD Water System Improvements: Permitted work has begun in Cutler to the water delivery service pipeline. This portion of improvements will improve the pipe size and capacity connecting well sites that were newly installed in the past several years.

Tract Map - TSM16-002 / Kingsburg Hash Subdivision: Crews are at work on the beginning stages of installing improvements for the tract along Avenue 396 in the Kingsburg area. An encroachment permit has been issued for work that is proposed within the current Right-of-Way of Avenue 396. Our inspectors will be providing oversight for water, sewer and storm drain pipelines, utility trenching including electrical, gas, telecom and cable services. Also included in the inspection duties are the subgrade structures, testing and paving sections, curb and gutter, sidewalks and all ADA installations. This map includes details and specifications from the City of Kingsburg, under agreement with Tulare County, and will require additional knowledge from our inspectors to keep both standards of Tulare County and the approved plans in mind.

The Oakieville Community Water Pipeline and Well Project Upgrade: Installation has been substantially completed to the water system, including water meter boxes and parcel services equipment, main pipelines, valves, hydrants and a new and updated well site are being installed. The project has placed the main pipeline on County Right-of-Way, and installed the service valves and lines. Completion and timetables will be affected by weather conditions during this part of the year. These improvements are similar to many other projects from the past few years, bringing the water systems up to federal quality and conservation standards, especially for hard hit areas with drought effected systems. The project continues to wait for internal portions to be completed, then final paving and approval can occur.

The SCE Cross Valley Aerial Transmission Reconductor Project–Phase 2 is still ongoing, but project crew availabilities were affected by the various fall wildfires, and crews removed to perform required safety inspections away from this project. Work will resume as weather permits. This project is on hold due to weather and will resume when drier weather returns.

Gas Company Pressure Betterment Project: Preliminary work has begun along Avenue 152 west of Poplar to install a new large diameter high pressure steel gas pipeline. This project will continue the upgrade to pipeline size and capacity which started at the City limits of Tulare, and has been installed in phases to a point east of Tipton on Avenue 152. This pipeline will connect the new larger pipeline and continue east to Poplar for the next phase. The preliminary work is completed; the pipe crews should begin work this spring.

HIGH SPEED RAIL

In the month of January County staff continued to work with the High Speed Rail Authority and their contractor in reviewing the grade separation packages for Avenue 120, Avenue 56, Avenue 88, Avenue 136, and Avenue 24 which have all been progressed to the final sets. Staff is continuing to negotiate the terms of a maintenance agreement with the Rail Authority for the grade separations of County maintained facilities constructed above the High Speed Rail alignment.

Paving work on Avenue 120 was completed by the Rail Authority’s contractor in the month of December. The pavement placed by the contractor did not meet smoothness requirements, as defined by Caltrans Standards. County staff directed the contractor to evaluate the site and develop a plan to correct these issues. The roadway was evaluated and County staff is in agreement with corrective areas identified by the contractor. County staff has been in continued communications with both the Rail Authority and their contractor and in the upcoming month will be on site to witness the corrective work which will consist of fine grinding where needed followed by the application of a fog seal. Resurfacing work on Avenue 24 is anticipated to begin within the next few months, weather permitting.

MANAGEMENT GROUP 3:

AIRPORT

RMA has placed an order for the LED Precision Approach Path Indicator lights (PAPIs) for Sequoia Field and are currently awaiting shipment from the supplier ADB Safegate. Due to lead times estimated arrival of the PAPIs is late March. At this time the construction documents that were drafted for the Navigation Aids at Sequoia field project, which the PAPIs are to be used for, are undergoing final review and preparation for bid advertisement. It is the intention of RMA to advertise the project in late February.

Documentation and plans for the Airport Layout Plan (ALP) were formally submitted to the FAA San Francisco Airports District Office for review and approval. RMA is currently in the process of closing out the FAA grant that was used for the updated ALP.

Another grant issued from the FAA in 2015 for the design of the Navigation Aids at Sequoia Field project is also in a closeout phase. Staff intends to have the project closed out by mid-February.

Staff submitted the updated Airport Capital Improvement Plan (ACIP) to Caltrans in January. The Caltrans ACIP is a biennial document that covers 10 years of proposed capital improvements. The improvements were based upon the need to do some resurfacing work on the runway in the coming year, with additional work to follow.

FLOOD CONTROL

No Flood Commission meeting was held in January.

The annual Lake Kaweah Enlargement Project (LKEP) Technical Committee Meeting was held in January but there was no quorum. The project is still attempting closeout, and is first awaiting reimbursement of certain fees by the US Army Corps of Engineers, with an additional reimbursement to follow. State reimbursements will follow any distributions by the Army Corps. In total, the Flood Control District may receive previously unanticipated reimbursements as part of this project.

The Tule River Improvement Joint Powers Agreement, including the separate JPA for the Success Reservoir Enlargement Project (also known as the Tule River Spillway Enlargement Project) held a joint Executive and Technical Committees meeting to discuss the project, timeline and actions. Funding for the project has been fully allocated by the federal government and the project is in the design and Right-of-Way acquisition phases.

There have been no flooding issues caused by flooding events in the month of January. Staff will continue to coordinate with other mutual aid groups throughout the County and monitor weather forecasts.

Staff continue to work on the Strathmore project. A design has been prepared and staff have begun utility coordination and development of detailed specifications. Staff expect to submit plans to the Friant Water Authority and other interested parties in February.

Caltrans is progressing with Phase 1 of the Poplar Storm Water project, but there are no significant updates on the project at this time.

Design plans have progressed for Reservation Road near the Tule River. Staff are meeting with contractor to develop a specialized solution. Staff are continuing to work on environmental and Right-of-Way clearances.

The design of the Cottonwood Creek/JDF project is being modified due to environmental and financial restrictions. Environmental permitting is progressing and negotiations with the State are ongoing for a grant to fund the construction of the project.

ZONES OF BENEFIT

Operations and maintenance of Zones of Benefit sewer systems continued with no spills for the month of January 2019.

Operations and maintenance of Zones of Benefit water systems continued in January with no known service interruption in Yettem, Delft Colony, and Seville.

Due to the possibility of disruptions in service at Seville, users are on an ongoing “Boil Water” notice, portable toilets continue to be provided to Stone Corral Elementary School, and two 5,000 gallon non-potable water tanks were provided to the school and the community. There were no service disruptions in the other systems during this month.

The water production and wastewater system’s wastewater treatment data is delayed one month. Below are the water production and wastewater treatment gallons that were produced or treated in the month of January, along with the capacity the system is using. There is no data for the lift station at El Rancho, as there is no flow totalizer.

Zone of Benefit - Water & Wastewater Volumes January 2019			
Sewer Systems		Water Systems	
Total Monthly Flow (Gallons)	% Capacity	Total Monthly Flow (Gallons)	
Delft Sewer	Flow Meter Non-Operational	Delft Water	1,156,000
Seville Sewer	801,740	Seville Water	1,267,200
Yetter Sewer	725,063	Yetter Water	703,100
Wells Tract Sewer	462,000	Wells Tract Water	581,320
Tonyville Sewer	442,200		
Tooleville Sewer	834,427		
Traver Sewer	748,860		
TBSMD	3,772,669		
El Rancho Sewer	Treatment provided by City		
TOTAL	10,033,339	TOTAL	3,707,620

WATER/SEWER PROJECTS

Construction on Phase 1 of the Yettem & Seville Water System Improvement Project is underway, with major work to begin in mid-March 2019. Phase 1 includes construction of a new water distribution system and storage tank in Seville, while Phase 2 is the intertie between the projects and the installation of meters in Yettem. Staff is also working to schedule a groundbreaking event on March 5, 2019 at 3:00 PM, a few days before significant construction work is imminent. Staff also spoke to the Grand Jury regarding this project in January, who asked about the total project timeline and its delays.

Staff continue to work with AECOM on the **Traver Wastewater Improvements Project**. The project is currently on hold pending the installation of a flow meter, which had been scheduled for late January but has been delayed until February due to rain.

TRANSIT

TCaT staff is looking at options for solar lighting on transit shelters and will be placing an order for approximately 12 solar lights for shelters throughout the County, focusing on locations where shelters have evening service, significant ridership, and are structurally capable of accepting lighting.

TCaT staff, at the request of TCAG, are going to do a short term (2 year) update for the Short Range Transit Plan, instead of a 5 year update through a consultant as previously discussed.

Staff continue to work with Trillium in completion of new a TCaT website enabling passengers to access County transit information in real-time and to plan trips around the County.

In the first two quarters of the fiscal year, TCaT staff has sold \$24,000 of fare media which will go directly into budget and count as towards the required farebox ratio. Staff continues to manage the Regional T-Pass sales and will be transferring those distributions to the other cities as part of a new biannual distribution. This is a change from previous protocol, where the T-Pass funds were only distributed at the close of the fiscal year instead twice per fiscal year.

TOMF and CNG Fueling System Project

In the month of January the Contractor, Seals Construction, made great progress in the construction of the building structures. The contractor completed the foundations for both the maintenance and operations building,



and has begun to move forward with the framing of the operations building. By the end of the month, the contractor had completed the framing of all internal and external walls and is scheduled to begin setting roof trusses in the upcoming week. Following the completion of the framing, the contractor will move forward with the building finishes including the installation of the roofing and stucco. The steel structure, which will make up the maintenance building, is currently being fabricated and the contractor is scheduled to install this structure within the next 2 months. As construction of the building structures continue, site improvements are also scheduled

to begin in the upcoming month. To date, the contractor has completed the majority of the rough grading for the parking facilities and the future fueling station. The contractor has also began excavating for the ponding basin located at the east end of the project site.

Staff continues to negotiate with the contractor for the removal of the CNG portion of the project from the current contract as well as delay costs associated with the postponed project start. Staff will continue to work with both the design architect and the contractor on the value of this deductive work and is planning to take the completed change order to the Board for approval as the deduct significantly alters the scope of the project.

The CNG Fueling System at the Transit Operations and Maintenance Facility project was advertised for bid on January 22, 2019. At this time RMA has a total of four plan holders that have expressed interest in submitting a bid for the project. Bid opening for the project is currently set for February 11, 2019 at 10:00 am at the Board of Supervisors office. The current project schedule has outlined the date of February 26, 2019 as the time in which a formal recommendation for the award of the construction to be made. RMA anticipates issuing a Notice to Proceed to lowest responsible bidder in early to mid-March following the review of bonds, insurance and contract execution.

MANAGEMENT GROUP 4:

SURVEYOR'S OFFICE

The activities and projects in process and/or completed in January 2018 are as follows:

Record of Survey	28	Parcel Map	21
Building Permit Review	31	Tract Map	5
Vacation of Right-of-Way	2	Merger of Parcels	1
Elevation Certificate	3	Waived Parcel Map	3
Corner Record	122	Lot Line Adjustment	3
Certificate of Compliance	1		

Projects related to field services provided by the Surveyor's Office are as follows:

Avenue 196 ADA Improvements, Strathmore	HSIPL Avenue 152 Safety
Allensworth Sidewalk	Ivanhoe Road 159 and Azalea
ATP Traver Jacob Street	Prop 1B Storm Water Resource
Avenue 280 Widening	Road 204 (Spruce) at Avenue 256
Bridge Balch Park, Bear Creek	Road 64 Improvement
Bridge 129 Sand Creek	RRAA Project 1 SB1
Bridge Avenue 376, Traver	RRAA Project 2 SB1
Bridge Avenue 428 Sand Creek	Strathmore Avenue 196 & Road 228
Earlimart Sidewalk Improvement Project	SW – Woodlake
Encroachment	Transit Operation & Maintenance Facility (TOMF)
Poplar Crossing Road 192	TOMF CNG Station, Engr.
Prop. 1B Storm Water Resource Plan	

Respectfully submitted,

Reed Schenke

REED SCHENKE, PE
Director

RS/nw

cc: Michael Washam, RMA Associate Director
Sherman Dix, RMA Fiscal Services Director

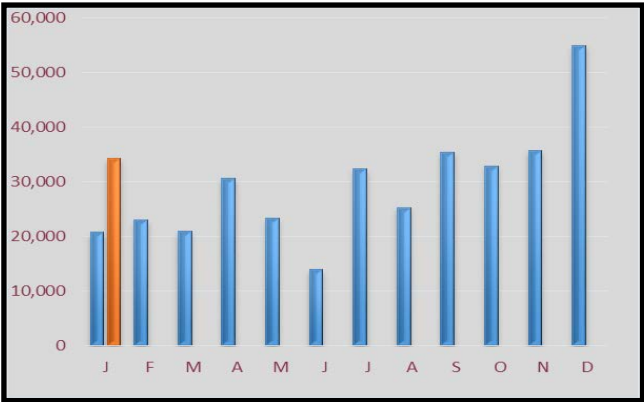
Tulare County RMA – Road Maintenance Activities

January 2019

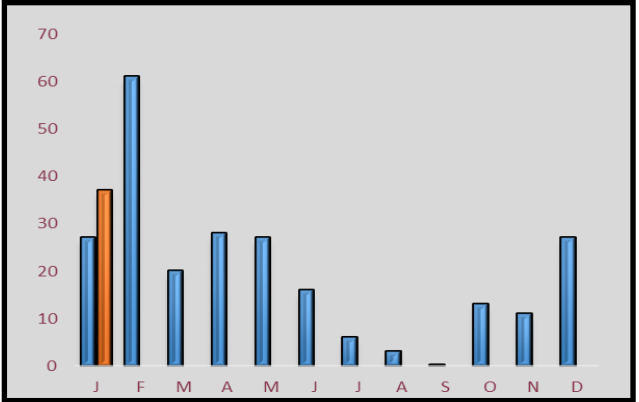


Dark Blue = 2018 Orange = 2019

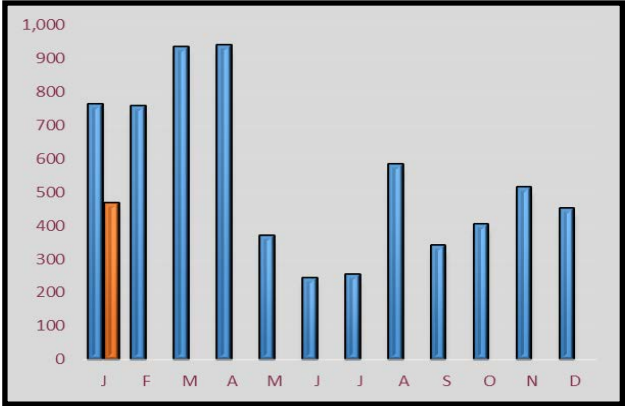
Potholes Patched



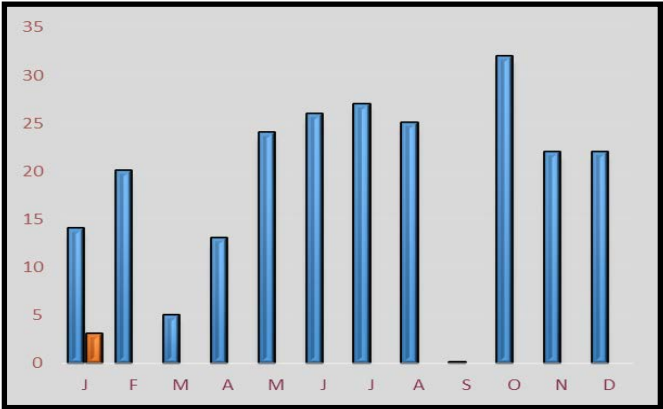
Shoulder Maintenance



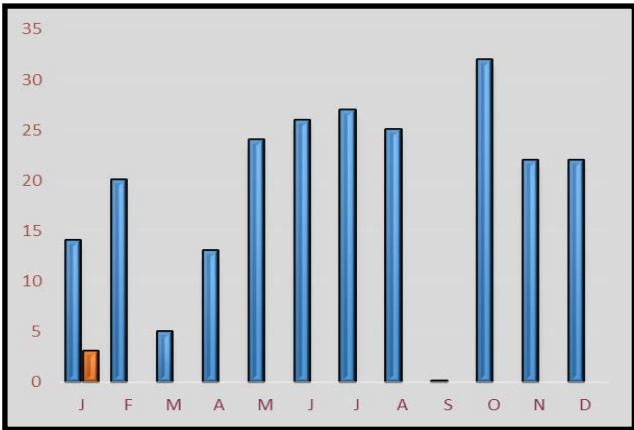
Traffic Signs



Blade Patch



Road Stencil



Road Stripe

