



RESOURCE MANAGEMENT AGENCY

5961 SOUTH MOONEY BLVD
VISALIA, CA 93277
PHONE (559) 624-7000
FAX (559) 730-2653

Michael Washam Economic Development and Planning
Reed Schenke Public Works
Sherman Dix Fiscal Services

REED SCHENKE, DIRECTOR

MICHAEL WASHAM, ASSOCIATE DIRECTOR

December 5, 2018

Supervisor Kuyler Crocker (Vice Chair) (District One)
Supervisor Pete Vander Poel (District Two)
Supervisor Amy Shuklian (District Three)
Supervisor Steve Worthley (Chairman) (District Four)
Supervisor Mike Ennis (District Five)
Jason Britt, CAO
2800 West Burrel Avenue
Visalia, CA 93291

Dear Supervisors and Mr. Britt:

The Public Works Branch of the Resource Management Agency (RMA) respectfully submits the following report to you to document the progress in the branch for the month of November 2018.

COUNTY PUBLIC WORKS RECOGNIZED FOR OUTSTANDING SERVICE

On November 8th the County and one of its employees were recognized by the Central California Chapter of the American Public Works Association for outstanding performance. Competition ranged from Sacramento to Kern Counties to the north and south, and Mariposa to Kings Counties to the east and west. The APWA awards program was established to recognize outstanding individuals and project teams in the public works profession. Nominations for awards and celebrations were presented for Young Leader of the Year, Professional of the Year, as well as five categories divided into construction value and populations served: (1) buildings/structures; (2) transportation; (3) environmental; (4) disaster or emergency construction/repair; (5) Historical restoration/preservation. Of the 14 awards presented, 6 were presented to Tulare County.



YOUNG PROFESSIONAL OF THE YEAR

Lead Engineer **Grey Tompkins** was named Young Professional of the Year. Grey has served the County of Tulare in this capacity for the Public Works division of RMA for over two years. As the County's Resident Engineer, Grey supervises over 10 professionals and technicians. Grey collaborates with the contractors, design teams and utility companies in addressing all construction issues, working diligently toward determining the most effective solutions to

minimize project delays. Grey was also responsible for review, analyzing and drafting all change order work for projects as well as negotiating reasonable costs for extra work. Grey's excellent organization and communication skills minimize the necessity for upper management to get involved in the oversight process of projects. Grey's efforts allowed the recent Avenue 416 Widening Project to move forward in such a way that the project was constructed ahead of schedule and under budget.

In addition to the Avenue 416 Widening Project, Grey has been the Resident Engineer on several Road and Bridge Construction projects. A small sampling of the recent construction projects Grey has supervised include:

- Road 280 Farm to Market Project;
- Road Repair and Accountability Act Projects 1 & 2 (SB1);
- Terra Bella and Richgrove Street Improvement Project;
- Avenue 144 Road Rehabilitation Project;
- Ledbetter Park Improvement Project;
- Avenue 196 at Orange Belt Signal Actuation Project;
- 57 Intersection Improvements Project (HSIP);
- 2016 Community Transportation Infrastructure Project;
- 2017 Community Transportation Infrastructure Project;
- Various Stop Control Intersection Project (HSIP);
- D-39 Traver Canal Bridge Replacement Project;
- Road 224 Deer Creek Bridge Replacement Project;
- Road 182 Deep Creek Bridge Replacement Project;
- Road 148 Outside Creek Replacement Project.

Grey is highly respected by his staff, his peers, contractors who work with the County, and outside agencies/entities who work with the Public Works division of the Resource Management Agency.

PROJECT OF THE YEAR (BUILDINGS/STRUCTURES) EARLIMART NEIGHBORHOOD PARK

Partnering with the Earlimart School District, the County constructed a multi-purpose neighborhood park on a vacant four-acre site owned by the Earlimart School District. As the lead agency, the County applied for and received a \$2,153,900 California Natural Resource Agency grant (Proposition 94) for the design and construction of this unique Park in this severely disadvantaged community. In addition to the obvious recreational needs of school children this project met, this project represents a local gathering place for families in the community with soccer fields, precast concrete tables, precast BBQ pits, basketball/volleyball courts and playground equipment.

PROJECT OF THE YEAR (DISASTER OR EMERGENCY CONSTRUCTION/REPAIR): PARKER PASS ROADSIDE INFRASTRUCTURE

This is the first tree mortality project to be recognized by any entity in the State. Tulare County developed this project to reinforce infrastructure that ensures emergency evacuation routes for local residents and tourists who may have to suddenly flee from communities built within forested areas considered at extreme risk of wildland fire due to tree mortality. The coordination effort between the Tulare County Resource Management Agency, Tulare County Fire, CalFIRE, the United States Forest Service, The Tulare County Office of Emergency Services, the CAO's Office and local residents required extensive strategic planning and community outreach.

PROJECT OF THE YEAR (TRANSPORTATION): D39 OVER TRAVER CANAL BRIDGE

The County was the lead agency for the construction of a new bridge over the Traver Canal at Road D39 located approximately .05 miles south of Avenue 368 within the unincorporated city of Traver. The project replaced the existing bridge built in 1918 that was too narrow and did not meet current engineering standards for bridge width. This project was part of the County's "Farm 2 Market" program, the value of which is measured as improvements to transportation facilities utilized by farm and dairy industries in Tulare County. As one of the leading agricultural counties in the nation, the newly constructed D-39 Bridge now accommodates larger farm equipment.

PROJECT OF THE YEAR (HONORABLE MENTION): AVENUE 144: TRANSPORTATION

In 2016, the Tulare County Board of Supervisors approved this "Farm 2 Market" road rehabilitation project. Avenue 144 is a highly utilized area by the farm and dairy industries in Tulare County. The Avenue 144 Rehabilitation Project consisted of improvements to approximately six-and-one-half miles of roadway along the Avenue 144 corridor from the alignment of Road 64 to State Route 99. Roadway improvements included two-and-one-half miles of roadway reconstruction starting west of State Route 99 and ending at Road 96, and four miles of asphalt concrete overlay from the alignment of Road 64 to Road 96.

PROJECT OF THE YEAR (HONORABLE MENTION): AVENUE 416 WIDENING: TRANSPORTATION

Tulare County widened an approximate three mile section of the highway from two-lane two-way to a four-lane divided highway. Along with the widening of the roadway, improvements also include wide depressed medians, left turn lanes at major intersections and businesses, wide shoulders, drainage facilities, utility relocations, and wide turn radius to accommodate truck traffic and two traffic signals at the intersections of the Road 48 and Road 52. The Tulare County segment was the first completed regional project funded by Measure R monies. The total project cost was approximately \$15 million and was completed in approximately 13 months.

MANAGEMENT GROUP 1:

ROAD MAINTENANCE

ROADS:

During November the Road's Maintenance crew performed the following work:

ROAD MAINTENANCE

Work Performed	Total	Percent Increase/Decrease(-) from Prior Month
Potholes Patched	35,758	9%
Shoulder work (Lane miles)	11	-20%
Blade Patches (Miles)	22	-32%
Bridges maintained	9	50%
Constituent requests	71	-31%
After hour call-outs	11	-56%

A graph showing a comparison of the work performed in 2017 and 2018 by the Roads Department is attached to the end of this report.

Additionally, Road staff:

- Hauled filled sandbags to various yards in preparation for the winter season per the Office of Emergency Services winter preparation plan;
- Crews responded to the first significant snowfall to perform snow removal;
- Implemented the snow removal procedure for M107 in the event State Route 190 is closed due to possible mud/rockslide road closure;
- All road maintenance yards are taking advantage of the remaining warm climate to complete blade patches prior to the winter season.

ROAD DISTRICT 1:

Activities in November include:

- Addressed constituent request for road maintenance;
- Continued weed and brush abatement in East Porterville and trimmed brush at one location due to visibility issues;
- Responded to six after hour call-outs for hazardous spill road closures, signs down, etc.;
- Performed tree removal at five locations;
- Continued to perform Measure R funded road preparation for blade patching;

Assisted District 5 in the installation of gates on M50 near M107 (Western Divide) and performed drainage ditch maintenance in preparation of the winter storm season



DISTRICT 2:

Activities in November include:

- Assisted Group 2 in the modification of street lights at the Goshen Park;
- Continued performing blade and pothole patching through constituent requests;
- Our newly formed concrete crew has completed another ADA project at the Alila School in Earlimart;

- Other work completed is the repair of damaged headwalls at bridge locations.



DISTRICT 4:

Activities in November include:

- Completed pre-winter season and constituent requested work in the community of Wilsonia;



Picture 1- Asphalt patching over culvert pipe

Picture 2 – Installed in down drain

Picture 3 – Installed new culvert pipe

- Completed bridge maintenance work at 6 locations to clean bridge decks and repair damaged rails;
- Performed shouder maintenanc at 11 locations;
- Continued culvert and drain inlet maintenance;

- Performed trimming, mowing and weed abatement at 16 locations;
- Performed blade patching at various locations.

DISTRICT 5:

Activities in November include:

- Performed pothole patching equaling approximately 32 miles of roads for a period of 7 days;
- Continued to trim trees and mow weeds district wide including the removal of palm fronds in Terra Bella;
- Performed snow removal, rock and tree clean-up for the first significant storm this season;



Continued to perform blade patching as weather permitted

Assisted Code Compliance in the marijuana eradication



TRAFFIC CONTROL:

SIGN MAINTENANCE

Work Performed	Total	Percent Increase/Decrease(-) from Prior Month
New signs installed	18	38%
Routine maintenance of signs	238	4%
Vandalized signs repaired/replaced	156	133%
Worn traffic signs repaired/replaced	102	26%
Miles of Road striped	77	3%
Stencils installed (Sq ft)	3744	10%
Traffic signal repair	3	-50%
Illegal signs removed from R/w	15	0%

Activities in November include:

- Installed new signage at the newly constructed play field at the Boy and Girls in Ivanhoe ;
- Responded to 14 call-outs for downed stop signs or signal malfunctions;
- Installed new laddered crosswalks at Alili School to compliment the newly installed ADA ramp completed by our concrete crew:



Installing ladder crosswalk



Drilling hole into concrete sidewalk to install post and sign

TRAFFIC DIVISION:

- Staff reviewed constituent requests for Stop signs, speed advisories, etc. as they were received;
- Observed pedestrian and vehicle movement at two school locations to recommend safety improvement.

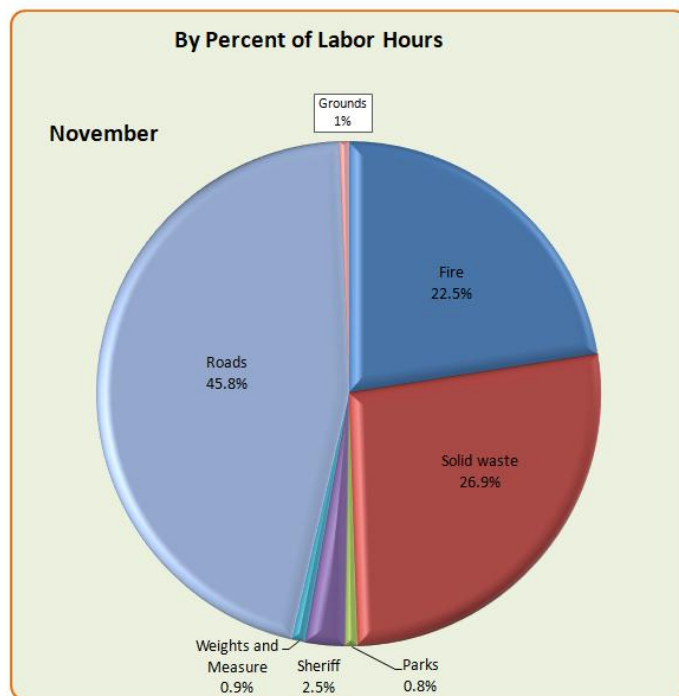
SAFETY:

- There were 8 claims through Risk Management during this reporting period;
- Inspected jobsite safety at locations to include the observation of the concrete crew and various blade patching sties including the operation of the traffic striping crew;
- Conducted FEMA certification for Construction Maintenance Workers;
- Conducted Forklift certification for the Porterville Road Yard;
- One request for the production of documents (*Ross vs. Whiting*).

HEAVY EQUIPMENT MAINTENANCE DIVISION:

The Heavy Equipment Shop maintained various pieces of equipment for 7 agencies in November. For the month of November, 387 work orders were completed totaling 2,099 hours as shown in the chart below:

Agency	Work Orders	Labor Hours
Fire	61	473
Solid waste	68	565
Parks	7	17
Sheriff	4	53
Weights and Measure	3	18
HHSA	0	0
Roads	239	961
Grounds	5	12
Agriculture	0	0
Total	387	2099



WORKED PERFORMED BY GROUP 1 FOR OTHERS:

For this time period in November, Group 1 performed work for:

- Code Enforcement and Sheriff Department for marijuana eradication – 2 days.

MANAGEMENT GROUP 2:

BRIDGE PROJECTS

During the month of November, construction on the **D129 Sand Creek Bridge** neared completion. Contractor, Agee Construction, poured bridge railing, completed all grading and paving, placed all shoulder backing, installed crash cushions and guard railing, sprayed Hydroseed, completed all in-channel work and placed road striping.



During the month of December all punch-list work will be completed including removal of the road detour and opening of the road to live traffic.

The **Balch Park (Bear Creek) Road Bridge** design is 100% complete with regard to the plans, specs and estimate. The County received federal authorization (E-76) to proceed with construction of this project in July. In October, the BOS awarded the project to Agee Construction for a low bid of \$1,805,832. During the month of November, the County's consultants performed preconstruction biological surveys and submittal reviews in anticipation of construction starting in early December. RMA staff also sent project information flyers to all residences in the area along with project stakeholders including SCICON, and Mountain Home Conservation Camp. Bridge construction is anticipated to take approximately 9 months to complete and will be completed in stages to keep Bear Creek Road open in the absence of a viable detour.

A new RFP for the design of three bridges was advertised on March 29, 2018. During November, agreements with TRC for the Avenue 428 Sand Creek Bridge and Drake Haglan for the Avenue 108 Lakeland Canal Bridge were approved by the BOS. Staff also worked with Counsel and Caltrans staff to finalize contract language with Cornerstone Structural Engineering Group for the Avenue 376 Traver Canal Bridge and this project will be awarded at the December 18th BOS meeting.

NEPA clearance for the **Mineral King (Oak Grove) Historic Bridge** has been secured; staff prepared and submitted a request for authorization to proceed with the Right-of-Way phase of the project in September. Planning staff also began preparing all necessary CEQA documentation (MND) to be circulated for public

review during the month of December. CEQA is expected to complete by February 2019. The consultant, Cornerstone Structural Engineering Group, continued work on the final design of the bridge rehabilitation. Construction is anticipated to start in the fall of 2021.

Design consultants continue to work on the following projects:

- Avenue 424 Traver Canal Bridge*
- Road 204 Wutchumna Ditch Bridge
- M348 South Fork Kaweah River Bridge*
- Avenue 364 Cottonwood Creek Bridge*
- Avenue 392 Sand Creek Bridge*
- Avenue 174 Friant-Kern Canal Bridge
- Avenue D112 Bates Slough Bridge
- D112 North Branch Tule River Bridge

Consultants continued moving forward with the environmental and preliminary engineering phases of the eight projects listed above in November. Projects with an asterisk (*) indicate that 35% design is complete and the project has Right-of-Way authorization to start negotiations for potential ROW/TCE needs on the project.

Bridge staff is also working with Friant Water Authority (FWA) to address both short and long-term impacts to five bridges affected by subsidence along the Friant-Kern Canal. Staff and counsel previously developed a draft Memorandum of Understanding (MOU) to establish roles/responsibilities to ensure these bridges remain in sound working condition due to induced pressure flows (water flowing up against the superstructure/girders). In November, staff worked with Counsel and FWA to finalize provisions of the MOU. The MOU will be approved by FWA's Board on December 14th and signed by the Board in January 2019. Note that this MOU will be retroactive to December 5, 2018, the date that FWA will start the in-channel work along the stretch of the Friant-Kern Canal hard hit by subsidence. FWA has indicated that in order to finish construction by the next flow season (starting March 1, 2019), work must start by December 5, 2018.

ROAD CONSTRUCTION PROJECTS

AVENUE 280 WIDENING: In the month of November the primary focus of work was on the electrical systems. The electrical subcontractor pulled and spliced the wiring for the street lighting as well as completed the placement of concrete foundations for the electrical service pedestals and traffic signal controller cabinets.

In addition to the electrical work, the final traffic striping was placed on Avenue 280 east of Akers Road as well as on the westbound lanes of Avenue 280 between Akers and SR 99. In the upcoming month the contractor is scheduled to install the remaining portions of Hot Mix Asphalt on the south half of the new roadway and will be working to get the new street lights and traffic signal operational, weather permitting.



SPACER DRIVE SAFETY IMPROVEMENT (HSIP CYCLE 8):

In the month of November County staff hosted a pre-construction meeting with the awarded contractor, Lee's Paving. The Notice to Proceed for the project was issued and work commenced on November 26th. In November the contractor was able to complete the placement of the rumble strips for the entire project site prior to being delayed by rain. In December the contractor anticipates installing the new high-visibility traffic stripping as weather conditions allow. Additionally, in the upcoming weeks the contractor is planning to begin the installation of the new roadside signs irrespective of any inclement weather.



SAFETY AND COMMUNITY IMPROVEMENT PROJECTS:

Earlimart ATP Sidewalk Improvements (ATP Augmentation): Funds for the Plans, Specifications and Estimates, were allocated and the Program Supplement was approved by the Board of Supervisors on March 6th. The design phase is ongoing.

Allensworth Elementary Sidewalk Project (ATP Augmentation): In November County staff hosted a pre-construction meeting with the awarded contractor, DOD Construction. The Notice to Proceed for the project was issued and the first working day was set as November 14th. The contractor mobilized a small crew to the site and has begun several items of work including the installation of Construction Area Signs and the recovery of Survey Monuments. In staff's opinion, this project has gotten off to a slow start due to both the Thanksgiving holiday as well as changing weather conditions we have experienced the past few weeks. In the upcoming month the contractor plans to mobilize a larger crew at the project site and will begin working on concrete improvements, including preparing the site for CSET to perform their portion of the work.

Avenue 152 Safety Improvement Project: County staff hosted a pre-construction meeting with MAC General Engineering (the awarded contractor) in November. The Notice to Proceed for the project was issued and the first working day was set as November 19th. Work on this project has been broken down into 3 phases to better handle traffic and to accommodate road closures in conjunction with Caltrans widening work on SR 190. The first phase of work includes closing Avenue 152 at the intersection of Road 120 to accommodate widening and asphalt overlay work. This closure involves detouring traffic onto SR 190 and requires an encroachment permit to be issued by Caltrans. Caltrans was not able to issue this permit to the contractor until November 16th which in turn delayed the start of the project. As a result, the contractor's request to delay the project start by one week was granted. Intersection widening work began on Road 120 on November 26th. Before the end of the month the contractor was able to complete all required native and sub-grade work and has the intersection prepared to be paved in the upcoming week. Once complete, the contractor plans to move to the next phase of the project which includes widening several intersections between Road 152 and Road 200. This work will also be completed under road closure and may be delayed by an additional week due to Caltrans' ongoing work on SR 190.

2017 Community Improvement Project - Phase 3: In the month of November the contractor, DOD Construction was primarily focused on work in the community of Goshen. Crews were on site the majority of the month as the contractor was able to complete the majority of the concrete improvement work prior to the end of the month.



The contractor also spent some time removing several segments of existing asphalt pavement and began preparing the native material and sub-grade material. Paving operations were scheduled to begin near the end of the month, however this work has been temporarily delayed due to weather conditions.



In the Community of Ivanhoe, the Contractor was able to complete all remaining concrete and storm drain improvements which has greatly improved the appearance of the intersection. Since the contractor was primarily focused on work in the community of Goshen, the intersection reconstruction work was left incomplete for the majority of the month. In the past week the contractor has returned back to the Ivanhoe project site and began preparing the intersection for paving work which has been scheduled for the first week of December.

Traver Jacob Street Improvements (ATP Cycle 2): Staff is coordinating with the utility companies and finishing the design phase. Request for Right-of-Way certification was submitted by October 31st. Funding allocation request for the construction funds is being prepared for the March 13th California Transportation Commission (CTC) meeting. The project is anticipated to go to construction in early summer 2019.

Woodville Sidewalk Improvement (ATP Augmentation-MPO Component): Right-of-way certification was obtained on October 1st for the project. Funding allocation request for the construction funds was submitted for the December 5th California Transportation Commission (CTC) meeting. Plans will be submitted for DSA review on January 23rd. The project is anticipated to go to construction in spring 2019.

Worth Drive (M146) Safety Improvement Project (HSIP Cycle 7): The Request for Authorization for construction will be submitted to Caltrans on December 3, 2018. The project is anticipated to go to construction in spring 2019.

HSIP Cycle 4 Grants: Four grants were requested for Cycle Four: (1) Avenue 144 and Road 96; (2) Avenue 256 and Road 164 – Avenue 240 and Road 140; (3) John Doyle Elementary; (4) Piedra Drive (D139). With the defeat of Proposition 6 in November, the award of the grant funding is anticipated in January 2019.

ATP Cycle 4 Grants: Twelve grants were requested for Cycle Four: (1) Orosi (\$1,950,000); (2) Strathmore (\$1.3 Million); (3) Goshen (\$1.1 Million); (4) Poplar (\$1,350,000); (5) Cutler (\$3 Million); (6) Tipton (\$3.9 Million); (7) E. Porterville (\$1 Million); (8) E. Porterville (\$2,150,000); (9) London (\$1.4 Million); (10) Traver (\$1.7 Million); (11) Ivanhoe (\$2.3 Million); and (12) Alpaugh (\$900,000). With the defeat of Proposition 6 in November, the award of the grant funding is anticipated in January 2019.

Earlimart Park Sidewalk Improvement Project (ATP Cycle 2): Funds for the Plans, Specifications and Estimates, were allocated and the Program Supplement was approved by the Board of Supervisors on March 6, 2018. The design phase is ongoing. RMA staff is scheduled to provide a brief presentation to community members at the Earlimart Town Council meeting on Thursday, December 6, 2018. County staff will be providing an overview of the project and how the project may impact the community in its presentation.

Pixley Main St. Sidewalk Improvement Project (ATP Cycle 2): Preliminary design is ongoing. Additional surveying has been completed. CEQA is complete. NEPA is not required due to this project using State funds only. Right-of-way acquisition and utility coordination is underway and right-of-way meetings with owners are ongoing. When the project was presented at the October 22nd regular meeting of the Pixley Town Council, Council members and members from the public expressed concerns with flooding at specific locations along the corridor. Staff completed a site reconnaissance to assess existing flooding issues along the corridor during the recent rain events, and identified additional improvements to help mitigate flooding issues. The project is under a tight funding deadline; staff is currently considering requesting a time extension under the ATP to allow adequate time to acquire the rights-of-way, easements, and to complete the design.

Community Improvements Phase 6: This project includes ADA and related improvements at the Road 192/Avenue 146 intersection in Poplar, the Road 228/Avenue 196 intersection in Strathmore, and at the Avenue 416 midblock crossing between Road 126 and Eddy Road to Golden Valley School. The project is currently in the 60% PS&E development phase, and right of way acquisition is underway. The project includes the relocation of a utility pole at the southeast corner of Road 228/Avenue 196 in Strathmore. The project is locally funded. Design and right-of-way are expected to be completed by June 2019.

Betty Drive Overpass and Interchange Project: A walk through was completed by County staff the week of November 5th and a final punch list was provided to Caltrans on November 9th. Caltrans is in the process of addressing and/or responding to the punch list items requested by the County. The County will accept the project as complete once the final punch list items have been addressed to the County's satisfaction.

TREE MORTALITY

The tree mortality crews removed 118 trees from Ponderosa in November. Other tree mortality partners continued with their projects as well. There is a desire at the State Forest Management Task Force to increase funding for tree removal sooner rather than later. A second round of CCI grants have been advertised by CalFIRE however Tulare County Fire has determined not to apply for additional funding at this time. The ten person hand crew has completed all tree mortality work until spring.

ASSISTANCE TO ECONOMIC DEVELOPMENT/PLANNING PROJECTS

Public Works provided GIS Maps to other branches of the Resource Management Agency. In November 102 maps were provided to the Planners for 20 separate projects.

ENCROACHMENT PERMITS

In November staff processed a total of 33 new encroachment permit applications. Staff also provided oversight and daily inspections for 40-45 daily/recurring projects. In November staff also:

- Processed and issued a total of 37 transportation permits comprised of 18 rider permits and 19 single-trip permits (including over-sized or overweight loads); 32 blanket/annual permits;
- Issued 16 sub-encroachment permits for inspections of jobsites under utility company annual/blanket maintenance permits, as well as reviewed sites, signing and safety for dozens of short-term repairs;
- Reviewed routing and issued permits for 2 house structure relocations;
- Processed documents, reviewed traffic control plans/routes, and issued four special event/parade permits.

Staff provided inspections and oversight for the following major projects while continuing to provide service to general permits including:

The Oakieville Water Pipeline and Well Project Upgrade: Installation continues to the water system, including water meter boxes and parcel services equipment, main pipelines, valves, hydrants and a new and updated well site are being installed. The project has placed most of the main pipeline on county right-of-way, and installed most of the service valves and lines. Completion and timetables will be affected by weather conditions during this part of the year. These improvements are similar to many other projects from the past few years, bringing the water systems up to federal quality and conservation standards, especially for hard hit areas with drought effected systems.

The SCE Cross Valley Aerial Transmission Reconductor Project–Phase 2 is still ongoing, but project crew availabilities were affected by the various fall wildfires, and crews removed to perform required safety inspections away from this project. Work will resume as weather permits. This project will be replacing the high voltage aerial cabling and hardware from Magunden substation in Kern County working into Tulare County and tying into substations Vestal and Rector (Rector Station is on Road 148, north of Avenue 280). The crossings require a traffic control plan and review plans to be reviewed case by case, as needed. The project is progressing on schedule.

Tract Map 789: Goshen Village Phase 1 - Construction of the portion of the tract along Avenue 310 in Goshen has progressed; curb and gutter will be installed soon. This project will also include improvements to the entire area between Avenue 308 and Avenue 310, making available more than 70 single dwelling residential building lots. This work will proceed after the homes along Avenue 310 are substantially completed and weather permits. Our inspectors will be providing oversight for water, sewer and storm drain pipelines, utility trenching including electrical, gas, telecom and cable services. Also included in the inspection duties are the subgrade structures, testing and paving sections, curb and gutter, sidewalks and all ADA installations.

Gas Company Pressure Betterment project: Preliminary work has begun along Avenue 152, west of Poplar to install a new large diameter high pressure steel gas pipeline. This project will continue the upgrade to pipeline size and capacity which started at the City limits of Tulare, and has been installed in phases to a point east of Tipton on Avenue 152. This pipeline will connect the new larger pipeline and continue east to Poplar for the next phase.

Edison Pole/Cable Replacement and Upgrades: Various permits and inspections have been issued, with special inspections set up and completed to assist Edison with utility pole replacement, and relocation of utility lines due to the Tree Mortality Process. Populated areas including Camp Nelson, Ponderosa, Pine Flat, California Hot Springs and Sequoia Crest, have been part of this special effort to expedite this process. This is an ongoing and arduous operation due to the scope of tree removal and funds available to replace and move these cables as shown in the pictures that follow:



HIGH SPEED RAIL

In November staff continued to work with the High Speed Rail Authority and their contractor in reviewing grade separation plans for Avenue 120, Avenue 56, Avenue 88, Avenue 136, and Avenue 24 which have all been progressed to the final sets and are awaiting letters of concurrence from the County. Staff is continuing to negotiate the terms of a maintenance agreement with the Rail Authority for the grade separations of County maintained facilities constructed above the High Speed Rail alignment. In the month of November the High Speed Rail Contractor began reconstruction work on Avenue 120. Work on Avenue 120 includes full depth reconstruction and utilized geo-grid material to assist with soil stabilization. By the end of the month the contractor was able to remove the entirety of the existing pavement section and began installing the geo-grid and base material. The base materials is nearly all in place and the contractor plans to begin paving the roadways back in the upcoming weeks. County staff is continuing to be involved in reviewing both submittals and material testing results and is regularly stopping by the project site to inspect the work. All work on Avenue 120 is expected to be completed before the end of the year.

MANAGEMENT GROUP 3:

AIRPORT

At this time RMA is currently preparing to procure the Precision Approach Path Indicator (PAPI) lights for the Navigation Aids at the Sequoia Field project. Staff have obtained several quotes for PAPI lights that meet the “Buy America” compliance stipulated by the Federal Aviation Administration (FAA). RMA has received advisement from the FAA on selecting a vendor and was informed that typical FAA policies just require that the lowest bidder (in this instance quote) be accepted. RMA is at this time verifying that the performance specifications for the PAPIs meet the design requirements specified by the project engineer. The procurement of the PAPIs is expected to take place in December.

Staff have scheduled their annual Airport Capital Improvement Program meeting with the FAA for December 11, 2018, where staff will discuss future projects and improvements for Sequoia Field. Staff are working to provide plans for past paving improvements to Sequoia Field to Caltrans as part of a statewide pavement management program, which will include a consultant conducting necessary inspections of the airport at no cost to the County. Staff have also been working on finalizing the Airport Layout Plan with staff and our consultant.

FLOOD CONTROL

No Flood Commission meeting was held in November.

Staff continues to work on the Cottonwood Creek/JDF flood protection project. The Board approved the Cottonwood Creek Storm water Resources Plan on October 30, 2018 subject to review and approval by the Water Board. The final updated plan Incorporating State Water Board and BOS Comments was submitted November 26th. Staff are working to finalize the plans and specifications and negotiate the project funding agreement with the Water Board as well for the Prop 1 Grant.

Staff continues to work on the Strathmore Flood Project. The preliminary plans are at 90% and are being prepared for submittal to the Bureau of the Interior. Staff completed internal Quality Assurance/Quality Control reviews of the plans. Staff will continue to prepare technical specs, which will be done in house.

Staff are also working on design options regarding the Reservation Road Project and are exploring an option for a warning light on the road coupled with early warning systems for the County, the Tribe, and other stakeholders. This would involve a cloud application to notify Tribal members of rising waters prior to the road becoming flooded and access restricted to the Reservation. Staff are currently working on communication links.

Staff worked with Management Group 1 to monitor and prepare for the rains which occurred at the end of November. No major incidents were reported, but M50 (Parker Pass Rd) has been closed between M107 (Western Divide) and Johnsondale due to multiple obstructions including snow and ice. M50 is still open between M107 and California Hot Springs. Johnsondale is still accessible through Kernville. Crews will evaluate the status of M50 and will clear the obstructions if weather cooperates. Crews are working to keep M107 open as long as possible this year in case of a debris flow along SR190 near the Pier Fire burn scar, east of Springville. Group 1 has begun to prepare a contingency plan for reopening M107 in the event that it is closed and a debris flow occurs on SR190.

ZONES OF BENEFIT

Operations and maintenance of Zones of Benefit sewer systems continued with no spills for the month of November.

Operations and maintenance of Zones of Benefit water systems continued in November with no known service interruption in Yettam, Delft Colony, and Seville.

Due to the possibility of disruptions in service at Seville, users are on an ongoing “Boil Water” notice, portable toilets continue to be provided to Stone Corral Elementary School, and two 5,000 gallon non-potable water tanks were provided to the school and the community. There were no service disruptions in the other systems during November.

The water production and wastewater system’s wastewater treatment data is received by staff mid-month after the data month has ended. Below are the water production and wastewater treatment gallons that were produced or treated in the month of November, along with the capacity the system is using. There is no data for the lift station at El Rancho, as there is no flow totalizer:

Zone of Benefit - Water & Wastewater Volumes November 2018				
Sewer Systems			Water Systems	
Total Monthly Flow (Gallons)		% Capacity	Total Monthly Flow (Gallons)	
Delft Colony Sewer	718,310	45%	Delft Colony Water	1,938,000
Seville Sewer	720,030	51%	Seville Water	1,890,200
Yettem Sewer	642,889	55%	Yettem Water	1,376,500
Wells Tract Sewer	508,000	95%	Wells Tract Water	1,360,460
Tonyville Sewer	437,660	20%		
Tooleville Sewer	618,729	57%		
Traver Sewer	811,164	33%		
TBSMD	3,673,655	40%		
El Rancho Sewer	Treatment provided by City			
TOTAL		8,130,437	TOTAL 6,565,160	

WATER/SEWER PROJECTS

Phase 1 of the **Yettem & Seville Water System Improvement Project** is active again as staff received the signed funding agreement from the state on November 29th. The County, its contractor, Self Help Enterprises and its contractor, and other stakeholders will be holding a preconstruction meeting for the project on December 5th, and expect to issue the Notice to Proceed at that time. Construction is expected to begin in January 2019. Staff have been coordinating with Carrie Monteiro, Board Rep, regarding a possible groundbreaking event for the project. Staff also met with Caltrans on November 20th regarding the Encroachment Permit for Phase 2, for which the application should be completed in December.

Staff continue to work with AECOM on the **Traver Wastewater Improvements Project**. Staff are working with AECOM to revise the project scope and direction to provide more options and lower costs for the short term, while also looking at recent developments including project interest by Foster Farms.

TRANSIT AND TOMF

Staff finalized the new **Transit** agreement with MV Transportation and it was approved by the Board of Supervisors on November 6, 2018.

Construction of the **TOMF** started on November 19, 2018. Staff continue to work with the contractor, Seals Construction, in the development of a deductive change order removing the CNG fueling facility from the scope of the TOMF project. RMA is engaging the project architect Arrington Watkins and their sub-consultant Cumming Inc. to prepare cost estimates for the CNG fueling system that will be used in reaching an agreement with Seals Construction on the credit that is to be issued as a result of removing the CNG fueling system from the scope of TOMF construction. RMA expects to have the preliminary figures regarding the deductive change order from Arrington Watkins in early December. RMA staff are presently working on preparing an agenda item to go before the Board that will cover a second contract amendment with the Arrington Watkins. This second contract amendment will reflect the additional costs incurred as a result of



separating the CNG fueling facility from the scope of the TOMF project and making the two projects independent. Following the completion of the negotiations with Arrington Watkins, staff will begin finalizing the plan sets and specifications for the CNG fueling system which following completion, will be submitted to Caltrans for approval. Final plan sets for the CNG fueling system are expected to be completed by early January.

Staff participated in the 2018 Farmworkers Women’s Health, Safety, Education and Environment Conference held at the Visalia Convention Center on November 2, 2018; nearly 1,500 women participated at this event. TCaT was there to distribute route information and answer questions regarding Tulare County transit services.

Staff provided a power point presentation to the Social Service Technical Advisory Committee (SSTAC) on November 14, 2018 regarding the operations of TCaT.

TCaT received a Standard Agreement for 5311 funding for operation in the amount of \$367,300, which will be presented to the Board in December. Staff also participated in the Fall CalAct conference held in Napa.

MANAGEMENT GROUP 4:

SURVEYOR’S OFFICE

The activities and projects in process and/or completed in November 2018 are as follows:

Record of Survey	20	Public Document Requests	23
Parcel Map	19	Building Permit Review	19
Tract Map	6	Merger of Parcels	1
Flood Hazard Determination	1	Waived Parcel Map	4
Lot Line Adjustment	3	Corner Record	133
Vacation of Right of Way	1	Lot Line Adjustment	3
Certificate of Compliance	4	Elevation Certificate	1

Projects related to field services provided by the Surveyor’s Office are as follows:

Avenue 144 Overlay Project	Bridge Sand Creek, D129
ADA Ramp Improvements	HSIPL Avenue 152 Safety
Allensworth Sidewalk	Ivanhoe Road 159 and Azalea
ATP Pixley Main Street	Prop 1B Storm Water Resource
Avenue 280 Widening	RAA Project 1 SB1
Bridge Avenue 392	RRAA Project 2 SB1
Bridge Balch Park Road	West Goshen Avenue 308

Respectfully submitted,

REED SCHENKE, PE
Director

RS/nw

cc: Michael Washam, RMA Associate Director
Sherman Dix, RMA Fiscal Services Director
Eric Coyne, Deputy County Administrator
Eddie Valero, District 4 Elect
Dennis Townsend, District 5 Elect

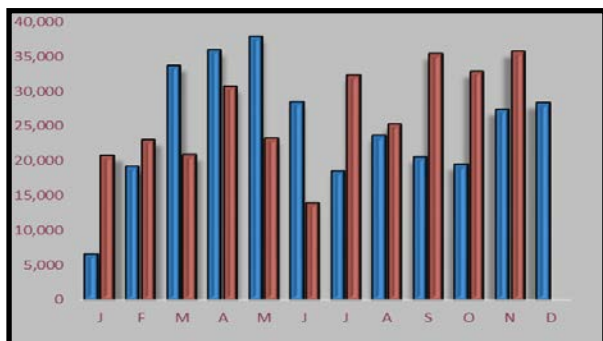
Tulare County RMA – Road Maintenance Activities

November 2018

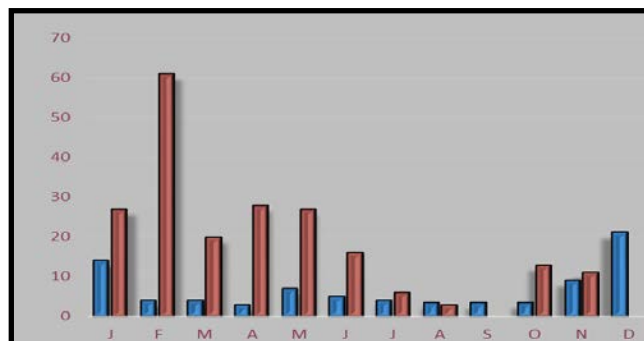


Blue = 2017 Rust = 2018

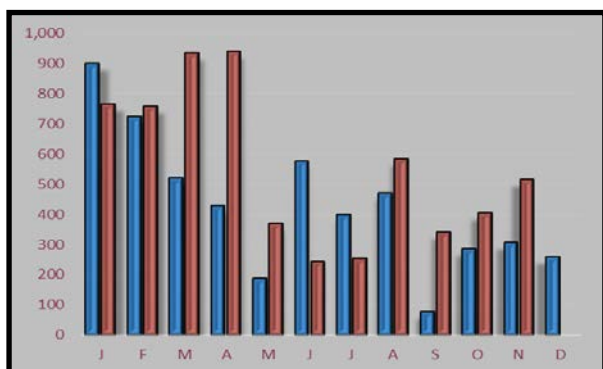
Potholes Patched



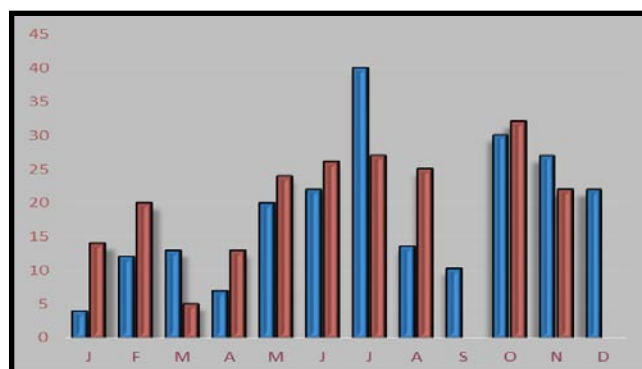
Shoulder Maintenance



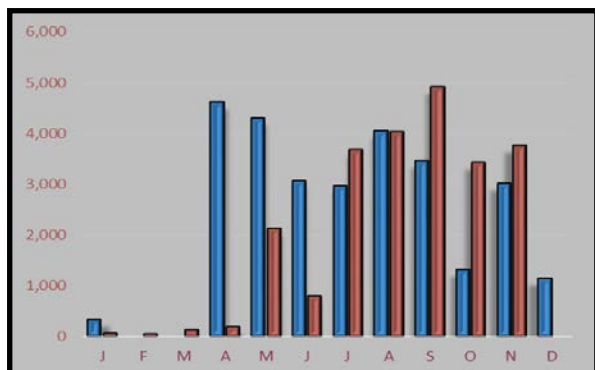
Traffic Signs



Blade Patch



Road Stencil



Road Stripe

