

ORDINANCE NO. 3629

AN ORDINANCE AMENDING ORDINANCE NO. 352, THE ZONING ORDINANCE OF TULARE COUNTY, BEING AN ORDINANCE ESTABLISHING AND REGULATING LAND USES WITHIN CERTAIN ZONES IN THE COUNTY OF TULARE.

THE BOARD OF SUPERVISORS OF THE COUNTY OF TULARE DO ORDAIN AS FOLLOWS:

Section 1. Paragraph B of Section 3 of Ordinance No. 352 of the County of Tulare is hereby amended by the adoption of an amended map of a portion of Section 26, Township 16 South, Range 22 East, Mount Diablo Base and Meridian, being a subdivision of Part 342 of the Official Zoning Maps. A map showing Change of Zone No. PZC 23-003 approved for approximately 6.84 acres is attached hereto and incorporated herein by reference. The new zoning will be M-1-MU (Light Manufacturing with Mixed Use Overlay).

Section 2. The property affected by the zoning reclassification from A-1 (Agriculture), is briefly described as follows: Being a 6.84-acre parcel, located on Tulare County Assessor Parcel Number (APN) 028-150-020. The subject property is within the Kingsburg Urban Development Boundary, at 39400 Clarkson Drive, on the North side of Clarkson Drive, and approximately 1,500 feet West of Road 16, East of Kingsburg.

Section 3. This Ordinance shall take effect thirty (30) days from the date of the passage hereof, or if published more than 15 days after the date of passage, then 30 days after publication, whichever is later, and, shall be published once in The Sun-Gazette, a newspaper printed and published in the County of Tulare, State of California, together with the names of the members of the Board of Supervisors voting for and against the same.

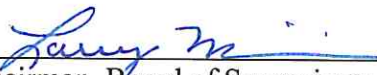
THE FOREGOING ORDINANCE was passed and adopted by the Board of Supervisors of the County of Tulare, State of California, on the 25th day of July, 2023, at a regular meeting of said Board, duly and regularly convened on said day, by the following roll call vote:

AYES: SUPERVISORS MICARI, SHUKLIAN, VALERO, AND VANDER POEL

NOES: NONE

ABSTAIN: NONE


ABSENT: SUPERVISOR TOWNSEND


Chairman, Board of Supervisors

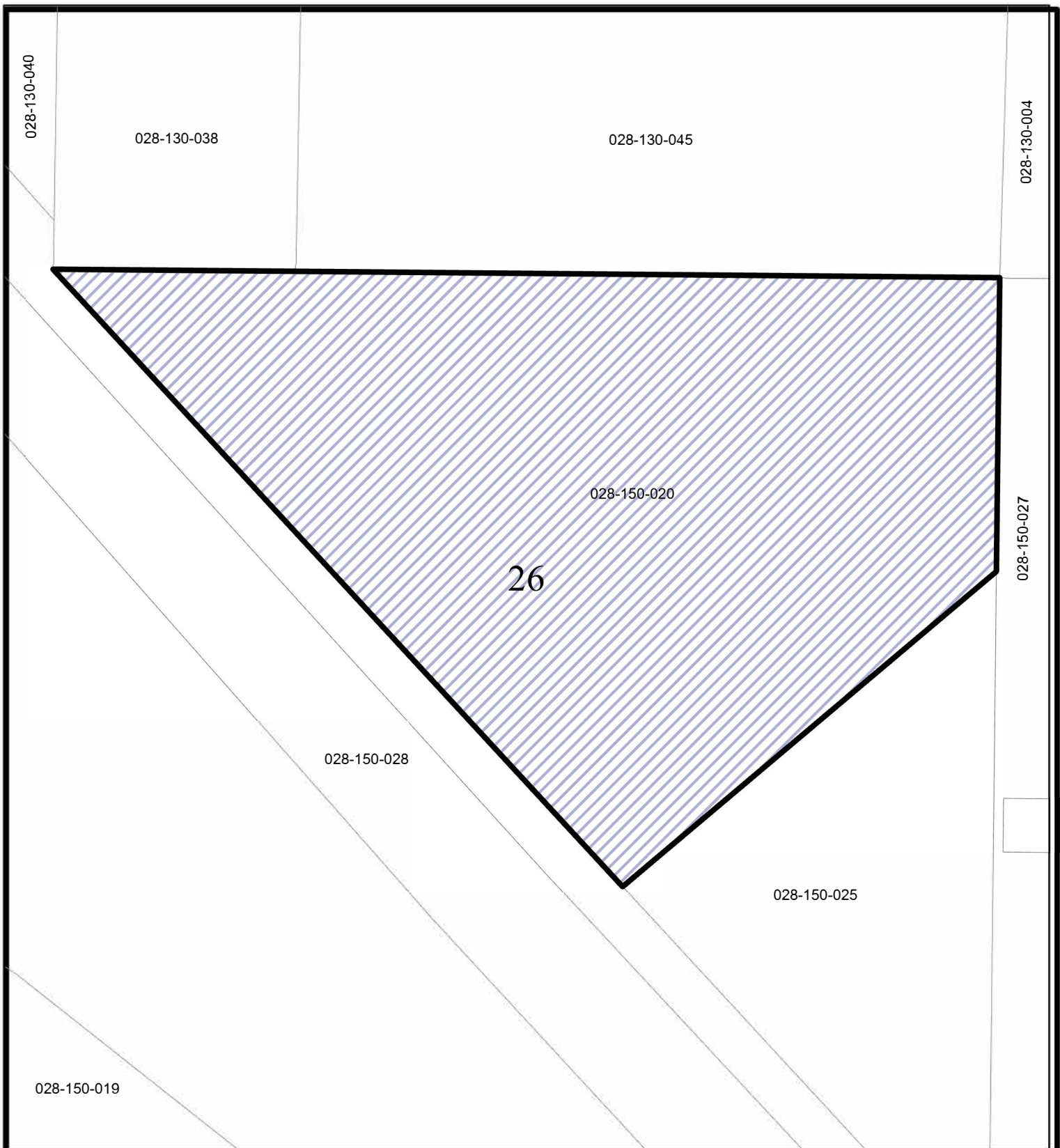
ATTEST: Jason T. Britt
County Administrative Officer/Clerk
Board of Supervisors

By: 
Deputy

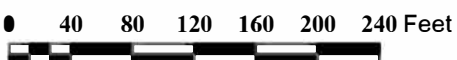
Approved as to Form:


Deputy County Counsel
Matter No. rma-general





APN: 028-150-020,
APROX. 6.50 AC.
Zone Change from A-1 (Agricultural) to
M-1-MU (Light Manufacturing with Mixed
Use) Overlay
(PZC 23-003)



ORDINANCE NO. 3629
AMENDING A PORTION OF MAP PART 342,
PART OF SEC. 26, T 16 S, R 22 E, M.D.B. & M.
OF
OFFICIAL ZONING MAP
COUNTY OF TULARE, CA.
TULARE COUNTY BOARD OF SUPERVISORS
ADOPTED: 7 / 25 / 2023