

ORDINANCE NO. 3659

AN ORDINANCE AMENDING ORDINANCE NO. 352, THE ZONING ORDINANCE OF TULARE COUNTY, BEING AN ORDINANCE ESTABLISHING AND REGULATING LAND USES WITHIN CERTAIN ZONES IN THE COUNTY OF TULARE.

THE BOARD OF SUPERVISORS OF THE COUNTY OF TULARE DO ORDAIN AS FOLLOWS:

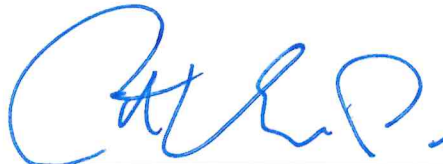
Section 1. Paragraph B of Section 3 of Ordinance No. 352 of the County of Tulare is hereby amended by the adoption of an amended map of a portion of Section 7, Township 18 South, Range 25 East, Mount Diablo Base and Meridian, being a subdivision of Part 310 of the Official Zoning Maps. A map showing Change of Zone No. PZC 24-009 approved for approximately 37.92-acres is attached hereto and incorporated herein by reference. The new zoning will be C-2-MU (General Commercial with a Mixed Use Overlay) Zone.

Section 2. The property affected by the zoning reclassification from AE-40 (Exclusive Agricultural – 40 Acre Minimum Zone), is briefly described as follows: Being a 37.92-acre parcel, located on Tulare County Assessor Parcel Number (APN) 078-050-030. The subject property is located at 12021 Avenue 328, approximately 0.87 miles northeast of the City of Visalia.

Section 3. This Ordinance shall take effect thirty (30) days from the date of the passage hereof, or if published more than 15 days after the date of passage, then 30 days after publication, whichever is later, and, shall be published once in The Sun-Gazette, a newspaper printed and published in the County of Tulare, State of California, together with the names of the members of the Board of Supervisors voting for and against the same.

THE FOREGOING ORDINANCE was passed and adopted by the Board of Supervisors of the County of Tulare, State of California, on the 8<sup>th</sup> day of July, 2025, at a regular meeting of said Board, duly and regularly convened on said day, by the following roll call vote:


AYES: SUPERVISORS MICARI, VANDER POEL, SHUKLIAN, VALERO, AND TOWNSEND  
NOES: NONE  
ABSTAIN: NONE  
ABSENT: NONE



Chair, Board of Supervisors

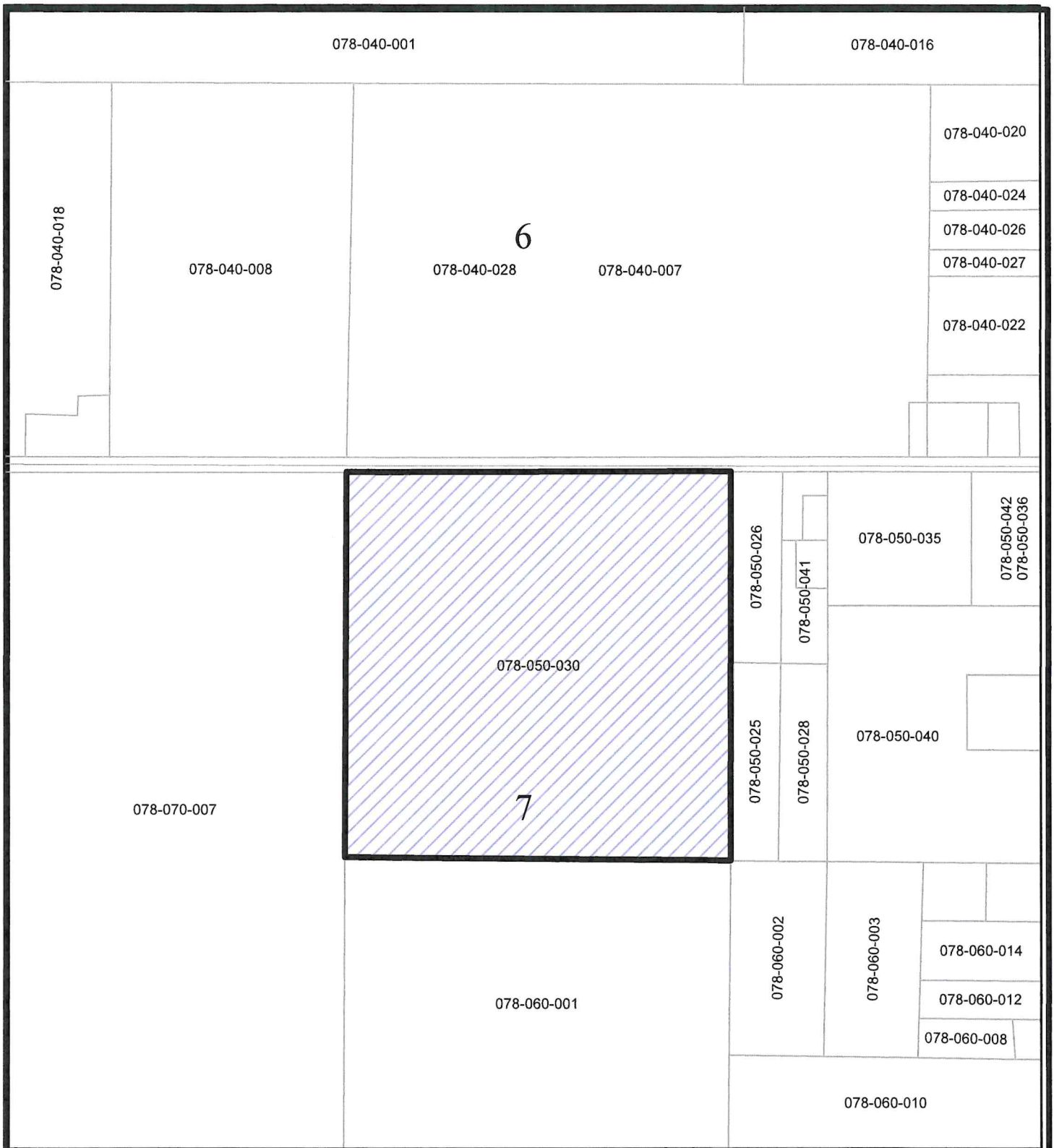
ATTEST: Jason T. Britt  
County Administrative Officer/Clerk  
Board of Supervisors

Approved as to Form:  
County Counsel

By:   
Matter # RMA-General

By:   
Deputy Clerk





APN: 078-050-030  
 APROX. 37.92 AC.  
 Zone Change from AE-40(Exclusive  
 Agricultural minimum 40-acres) to  
 C-2-MU( General Commercial with a  
 Mixed Use Overlay) Zone  
 (PZC 24-009)

0 250 500 750 Feet



ORDINANCE NO. **3659**  
 AMENDING A PORTION OF MAP PART 310  
 PART OF SEC. 7, T 18 S, R 25 E, M.D.B. & M.  
 OF  
**OFFICIAL ZONING MAP**  
**COUNTY OF TULARE, CA.**

TULARE COUNTY BOARD OF SUPERVISORS  
 ADOPTED: **07 / 08 / 2025**